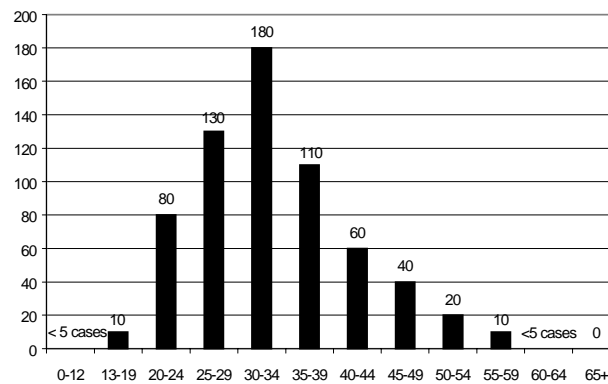


# Focus on AIDS and Sexually Transmitted Infections

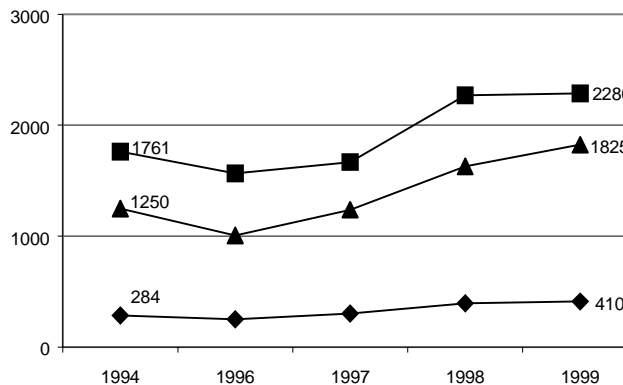
The Community HealthWatch report cards are developed by the Kent County Health Department to present health information that is being monitored by Healthy Kent 2010, a community health committee dedicated to improving our county's health. This report card focuses on AIDS and Sexually Transmitted Infections (STIs). The STI/AIDS Implementation Team, a subcommittee of Healthy Kent 2010, has focused their efforts on promoting health behaviors related to STIs and HIV/AIDS in teen and young adult populations. Local data suggest that rates of disease are significantly higher in the 15-24 year old population.

## HIV Cases by Age Group



Estimates of the number of **persons living with HIV** in Kent County indicate that individuals as young as thirteen years of age have acquired HIV, the virus that causes AIDS. Prevention efforts among persons ages 13-19 and 20-24, who have not acquired HIV perinatally, could potentially prevent the further spread of HIV. The Centers for Disease Control suggests "sustained, targeted prevention for each group..."

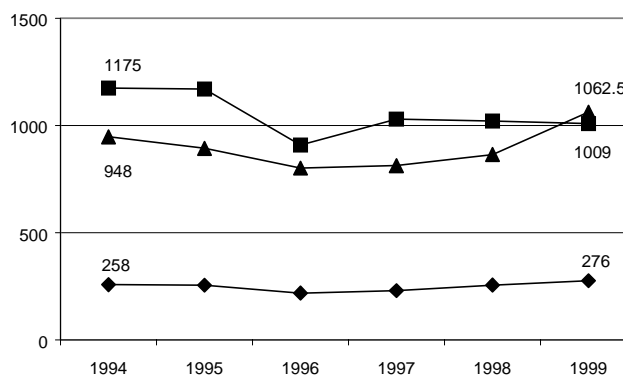
## Chlamydia: New Case Rate



The number of **new cases of chlamydia** has consistently increased in Kent County since 1994. The rate of new cases among the teen and young adult populations is significantly higher than the rate for all age groups. As of 1999, 74% of all new cases of chlamydia in Kent County were found in the 15-19 and 20-24 year old populations.

◆ Total Kent County rate  
■ 15-19 years of age  
▲ 20-24 years of age  
Rates reported are the number of cases per 100,000 Kent County residents.

## Gonorrhea: New Case Rate



Since 1994 the **gonorrhea** rate has remained stable in the 20-24 year old population and decreased in the 15-19 year old population. In spite of this decrease, rates of disease are still much higher among teens and young adults than the general population. Persons 15-24 accounted for approximately 60% of all new cases of gonorrhea in Kent County in 1999.