

**2007**  
**ANNUAL BUDGET**  
**Kent County, Michigan**



Daryl Delabbio  
County Administrator/Controller

Robert White  
Fiscal Services Director





GOVERNMENT FINANCE OFFICERS ASSOCIATION

*Distinguished  
Budget Presentation  
Award*

PRESENTED TO

**Kent County  
Michigan**

For the Fiscal Year Beginning

**January 1, 2006**

President

Executive Director

The Government Finance Officers Association of the United States and Canada (GFOA) presented a Distinguished Budget Presentation Award to Kent County, Michigan for its annual budget for the fiscal year beginning January 1, 2006. In order to receive this award, a governmental unit must publish a budget document that meets program criteria as a policy document, as an operations guide, as a financial plan, and as a communications device.

This award is valid for a period of one year only. We believe our current budget continues to conform to program requirements, and we are submitting it to GFOA to determine its eligibility for another award.

## Kent County Board of Commissioners



**Pictured back row left to right:** Jack Horton, Paul Mayhue, Ted Vonk, Dean Agee, Chair David Morren, Vice-Chair Roger Morgan, Dan Koorndyk, James Vaughn, Dick Vander Molen, Arthur Tanis. **Front row left to right:** Jack Boelema, Tom Postmus, Marv Hiddema, Harold Mast, Nadine Klein, Fritz Wahlfield, Gary Rolls, Harold Voorhees, Dick Bulkowski.

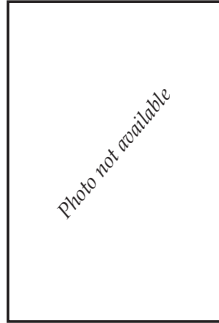
# Kent County Elected Officials



Mary Hollinrake  
County Clerk



William Forsyth  
Prosecuting Attorney



Doug Sporte  
Drain Commissioner

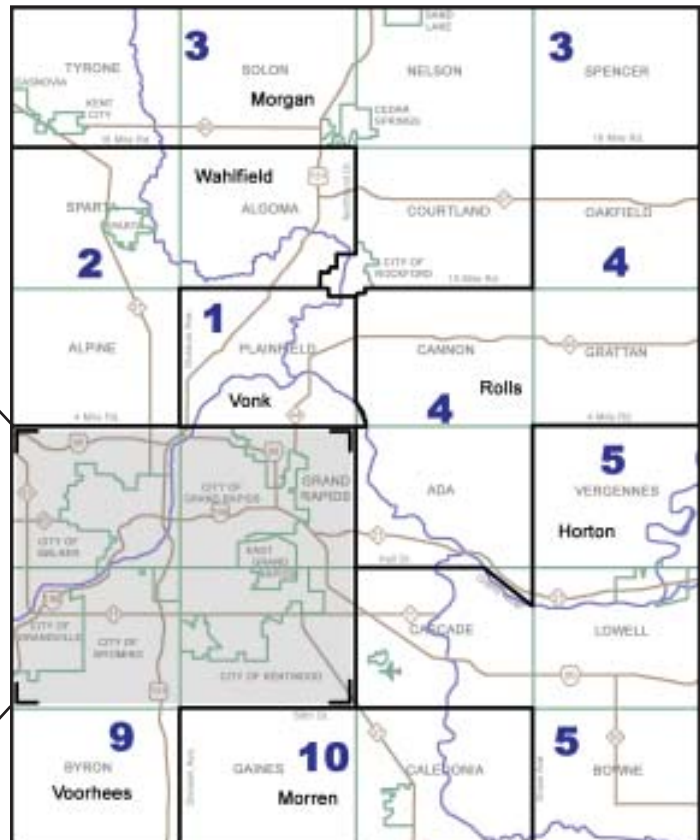
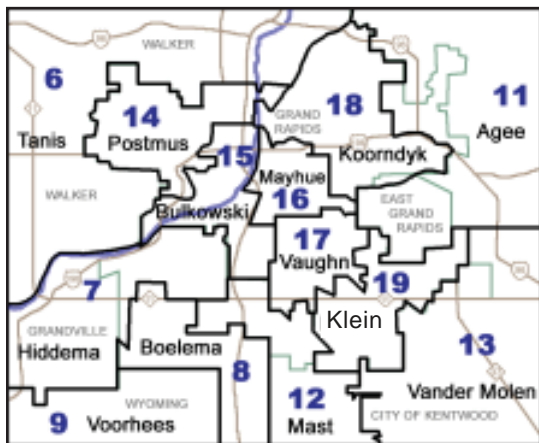


Kenneth Parrish  
Treasurer



Larry Stelma  
Sheriff

## Board of Commissioners District Map



*This page left blank intentionally.*

# Table of Contents

**A. Readers' Guide**  
 Provides orientation to the reader in regards to document format and contents, describes Kent County government and demographics, and explains the process and policies that guide the development of the budget.

**Readers' Guide** ..... A-1

**County Profile** ..... A-3

**Organizational Structure** ..... A-9

**Budget Process** ..... A-10

**Summary of Budget Policies** ..... A-12

**Basis for Budgeting** ..... A-15

**B. Budget Overview**  
 Provides a comprehensive overview of the adopted County Budget. The Budget Message from the Administrator/Controller outlines the priorities, parameters, and issues involved in developing the budget. The subsequent sections summarize the County budget as a whole by fund, functional area, and category, and include a history of personnel positions.

**Introduction** ..... B-1

**Budget Message from the County Administrator/Controller** ..... B-2

**Significant Budget Issues** ..... B-9

**All Funds Summary**

2007 All Funds Budget Summary by Fund Type and Component Unit ..... B-12

All Funds History of Fund Balances ..... B-13

All Funds Budget History by Functional Area ..... B-14

All Funds Budget History by Category ..... B-15

All Funds Personnel History by Functional Area ..... B-16

**C. Fund Summaries**  
 Provides a description and three-year history of each fund, summarized by fund type, including a detailed summary and history of the County's General Fund.

**Introduction** ..... C-1

**Description of Funds** ..... C-3

**General Fund Summary**

Statement of Uses of Financial Resources ..... C-5

Fund Statement ..... C-8



Summary by Functional Area .....	C-9
Summary by Category .....	C-10
History of Revenues by Category .....	C-11
Revenue Forecast by Category .....	C-13
Expenditure Forecast by Category .....	C-14
 <b>Special Revenue Funds Summary</b>	
Summary Statement of Uses of Financial Resources .....	C-15
Fire Prevention Fund .....	C-17
Parks Fund .....	C-18
Friend of the Court .....	C-19
Health Fund .....	C-20
Lodging Excise Tax Fund .....	C-21
Correction & Detention Facilities Fund .....	C-22
Senior Millage Fund .....	C-23
Register of Deed Automation Fund .....	C-24
Drug Law Enforcement Fund .....	C-25
Community Development Fund .....	C-26
State Revenue Sharing Reserve Fund .....	C-27
Child Care Fund .....	C-28
Department of Human Services Child Care Fund .....	C-29
Veterans' Trust Fund .....	C-30
Special Projects Calendar Year Funds .....	C-31
Special Projects Fiscal Year Funds .....	C-32
 <b>Debt Service Funds Summary</b>	
Statement of Uses of Financial Resources .....	C-33
Debt Service Fund .....	C-34
Building Authority Debt Service Fund .....	C-35
 <b>Capital Project Funds Summary</b>	
Statement of Uses of Financial Resources .....	C-36
Building Authority Construction Fund .....	C-37
Bond Capital Improvement Fund .....	C-38
Capital Improvement Fund .....	C-39
 <b>Internal Service Fund Summary</b>	
Statement of Uses of Financial Resources .....	C-40
Risk Management and Benefits Fund .....	C-41
 <b>Component Unit Funds Summary</b>	
Statement of Uses of Financial Resources .....	C-42
Public Works Fund .....	C-43
Social Welfare Fund .....	C-44
Housing Commission Fund .....	C-45
 <b>Proprietary Funds Summary</b>	
Statement of Uses of Financial Resources .....	C-46
Aeronautics Fund .....	C-47
Delinquent Tax Revolving Fund .....	C-48



**D. Department Summaries**

Provides an overview of County activities, organized by Functional Area. Each overview includes a description of the department or program, discussion of any significant issues in prior years and current year budget, and personnel history. Mission statements, goals, and performance measures are also included for each County department. Each functional area is summarized “at a Glance” at the beginning of each section.

**Introduction** ..... D-1

**Cultural & Recreational Functional Area at a Glance** ..... D-3

Kent/MSU Cooperative Extension ..... D-6

John Ball Zoological Gardens ..... D-8

Parks ..... D-10

Non-Departmental:

Lodging Excise Tax ..... D-12

**Enterprise Functional Area at a Glance** ..... D-13

Department of Aeronautics ..... D-16

Department of Public Works ..... D-18

**General Government Functional Area at a Glance** ..... D-21

Administrator’s Office ..... D-26

Office of the Executive Assistant to the Board of Commissioners ..... D-28

Bureau of Equalization ..... D-30

Community Development ..... D-32

County Clerk ..... D-34

Drain Commissioner ..... D-40

Facilities Management ..... D-42

Fiscal Services ..... D-44

Housing Commission ..... D-46

Human Resources ..... D-48

Informational Technology ..... D-50

Risk Management ..... D-52

Treasurer’s Office ..... D-54

Non-Departmental:

Debt Service ..... D-56

Building Authority Debt Service ..... D-56

Intergovernmental ..... D-57

**Health & Welfare Functional Area at a Glance** ..... D-59

Health Department ..... D-62

Child Care Fund ..... D-70

Soldiers & Sailors Relief ..... D-72

Non-Departmental:

Prevention Initiative ..... D-73

Senior Millage ..... D-73

Department of Human Services ..... D-74

Veteran’s Trust ..... D-75

**Judicial Functional Area at a Glance** ..... D-77

17th Circuit Court ..... D-80

63rd District Court ..... D-88

Community Corrections ..... D-90  
 Probate Court ..... D-92  
 Prosecutor’s Office ..... D-94

**Public Safety Functional Area at a Glance** ..... D-97  
 Sheriff’s Department ..... D-100  
 Non-Departmental:  
 Fire Prevention ..... D-104

**Other Functional Area at a Glance** ..... D-105  
 Central Services ..... D-106  
 Fleet Services ..... D-108  
 Non-Departmental:  
 Alliance for Health ..... D-110  
 Area Agency on Aging..... D-110  
 Area Community Services & Employment Training (ACSET) ..... D-111  
 Economic Development ..... D-111  
 Legal Assistance Center .....D-112

**Transfers at a Glance** ..... D-113

**E. Capital**

Provides an overview of the Capital functional area, which includes expenditures related to Building Authority Construction and the Capital Improvement Program (CIP). The section provides program descriptions, discussion of any significant budget issues, and a three-year history of uses and personnel, as well as a description of CIP projects.

**Introduction** ..... E-1

**Capital Functional Area at a Glance** ..... E-2  
 Building Authority Construction Fund ..... E-3  
 Bond Capital Improvement Capital Project Fund ..... E-4  
 Capital Improvement Program Fund ..... E-5

**F. Revenue Assumptions**

Discusses the assumptions made for determining County revenue projections.

**Introduction** ..... F-1

**Revenue History and Revenue by Category** ..... F-3

**Revenue Discussion by Category** ..... F-4

**Revenue Assumptions by Fund** ..... F-5

**Revenue History by Fund** ..... F-9

**G. Appendix**

Provides additional documentation of interest.

**Budget Resolution**..... Appendix A-1

**County Debt/Retirement**..... Appendix B-1

**Glossary**..... Appendix C-1

*This page left blank intentionally.*