

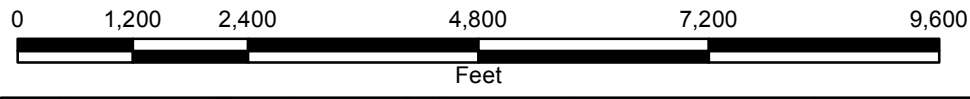
Office of the Kent  
County Drain Commissioner



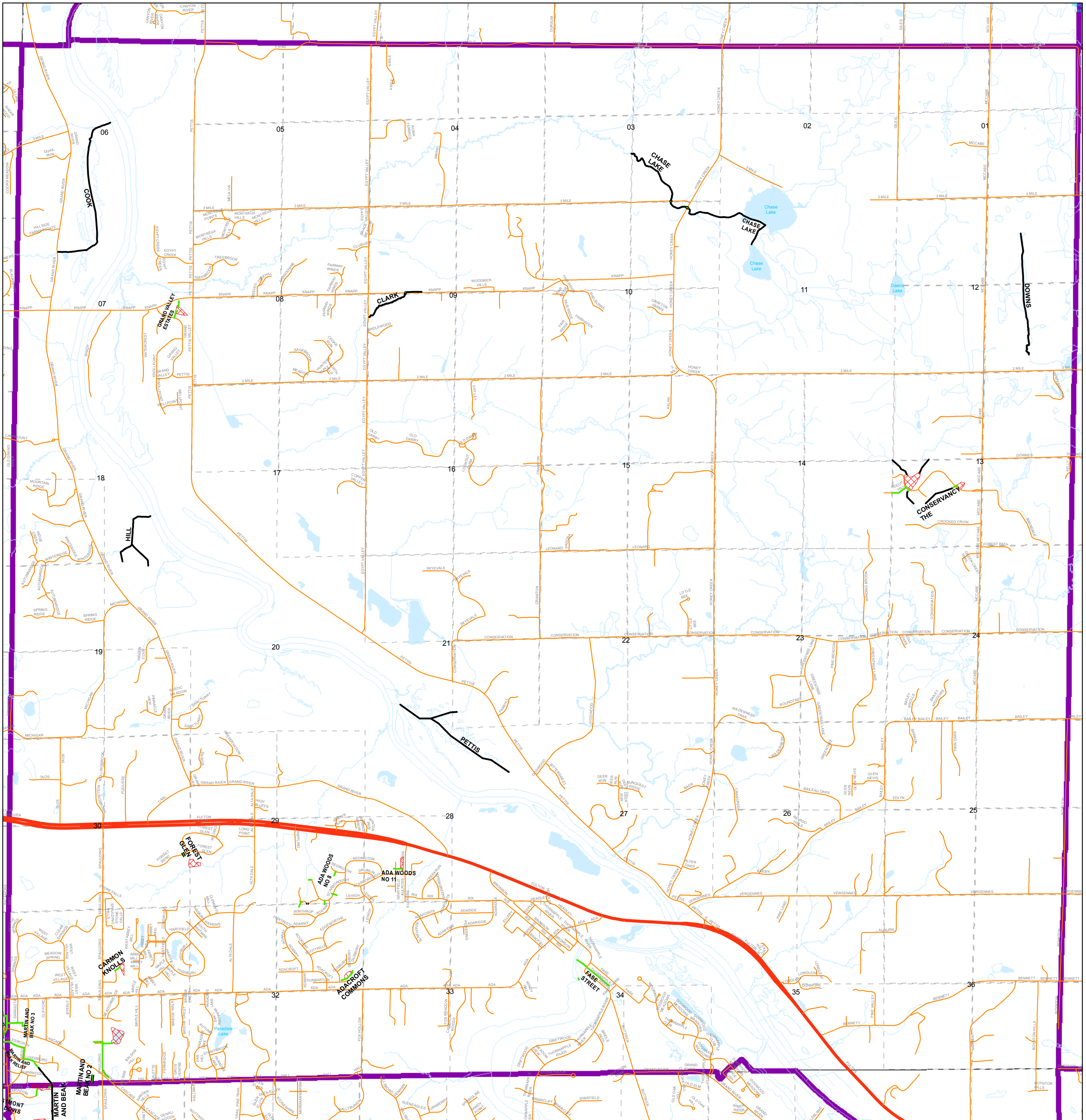
# Ada Township

## T.07N., R.10W.

	Culvert
	Flood Route
	Open Channel
	StormMain
	Detention Basin



November 22, 2016



Kent County, MI makes no warranty, expressed or implied, regarding the accuracy, completeness or usefulness of information presented. Users of this information assume all liability for its fitness for a particular use.