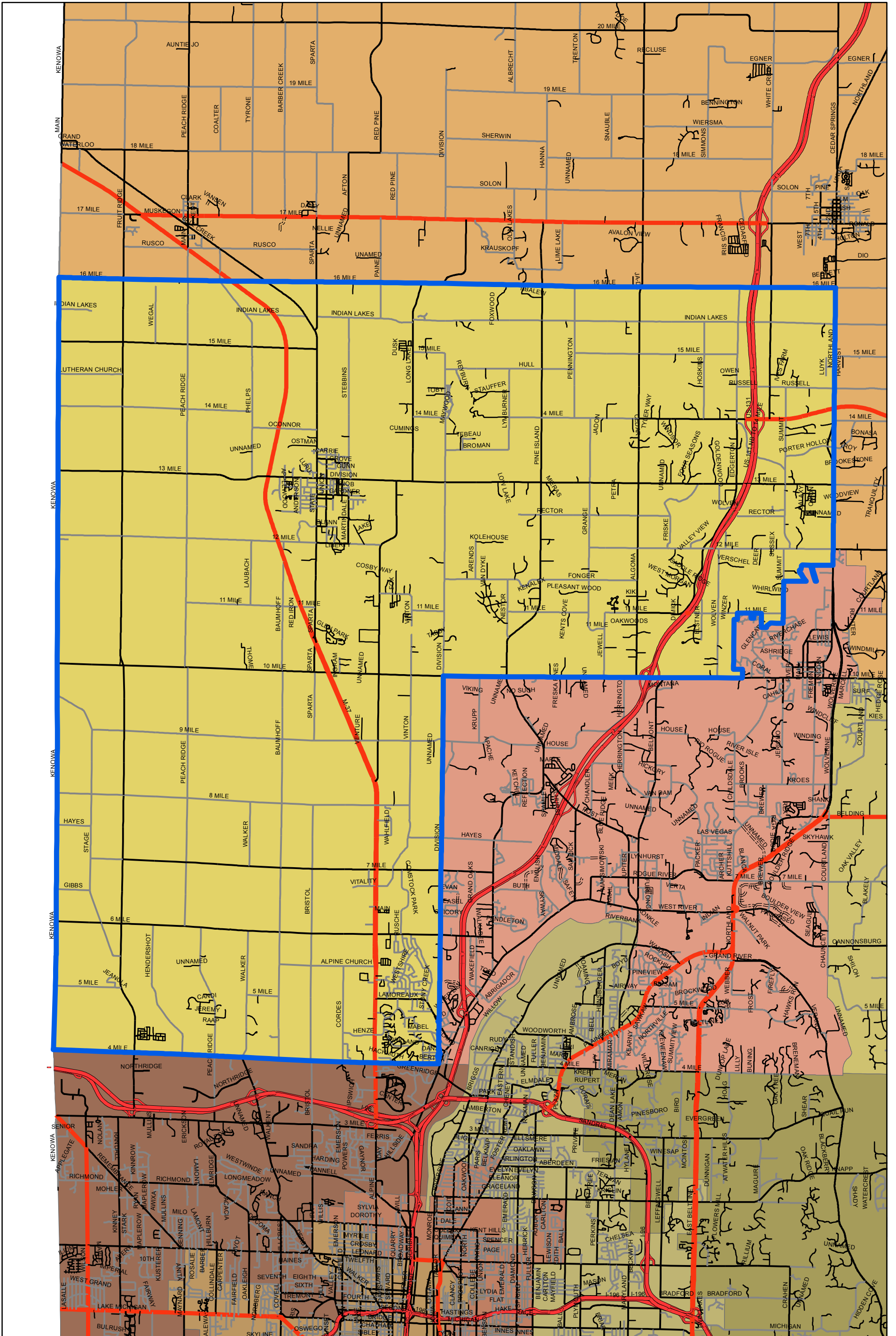


Kent County Commissioner District 2



This map does not represent a legal document, it is intended to serve as an aid in graphic representation only. Information shown on this map is not warranted for accuracy and should be verified through other means.



Kent County Bureau of Equalization
Property Description & Mapping Division

1 inch = 7,417 feet



District 2

Commencing at the intersection of Kenowa Ave and 16 Mile Rd thence east along 16 Mile to Northland Dr thence south along Northland to the corporate boundary of the City of Rockford thence westerly, southerly, and westerly along the corporate boundary to Summit Ave thence south along Summit to the corporate boundary thence westerly and northerly along the corporate boundary to 11 Mile Rd thence west along 11 Mile to the corporate boundary thence south, west, and north along the corporate boundary to 11 Mile thence west along 11 Mile to the corporate boundary thence south, west, south, east, and south along the corporate boundary to 10 Mile Rd thence west along 10 Mile to Division Ave thence south along Division, which is common to the corporate boundary of Alpine and Plainfield Townships, to the corporate boundary of Alpine Township and the City of Walker thence west along the corporate boundary which becomes common with 4 Mile Rd to Kenowa Ave thence north along Kenowa to the beginning.