

KENT COUNTY HEALTH DEPARTMENT 2015 Annual Report

*To serve, protect and promote a healthy
community for all.*



HEALTH
DEPARTMENT
Caring today for a healthy tomorrow

A Message from the Health Officer of Kent County

It is very common to hear organizations talk about the value of collaboration. In fact, collaboration, done properly, is hard work. It requires joint labor by various entities focused on common objectives and it is often done in spite of credit or accolades. To truly collaborate upon community health priorities requires selfless dedication to purpose and a deep concern for the wellbeing of others.

As your Kent County Health Officer, I could not be more pleased to inform you that your community does a tremendous job collaborating in order to serve, protect, and promote a healthy community for all.

Within this 2015 Annual Report, you will find numbers and facts related to your Kent County Health Department's actions during the year. These outputs combined with the outputs and collaboration of many other local entities, are responsible for making Kent County a healthier place.

Consider for example that dozens of organizations and individuals are working together on the four priorities of the Community Health Needs Assessment: mental health, obesity & nutrition, substance use disorder, and violence. Also consider that, once again, Kent County ranked in the top five counties for influenza vaccination rates due to the extraordinary network of vaccine providers.

Furthermore, throughout most of 2015 this department worked with hospitals, first responders, the airport, and other authorities to monitor and plan for the Ebola virus. There are many other examples of collaborative successes – early detection and treatment of cancer, improved birth outcomes, enhanced access to dental care, fewer vaccine waivers, more animal adoptions, and much more. This annual report will summarize some of these successes, but please remember that these accomplishments would not be possible without the contributions of so many in this community.

In closing, I would like to tell you about a number that you won't see anywhere else in this report: 268. This department has 268 employees who live and breathe public health. 268 employees who also happen to be your neighbors, family, and friends. 268 amazing people that I am honored to serve alongside. Kent County is fortunate and blessed to have countless collaborators working together for the common good and 268 outstanding public servants at the Kent County Health Department.



Adam London, MPA, RS, DAAS
Health Officer
Kent County Health
Department



The four divisions of the Kent County Health Department provide different services with common goals: preventing disease, prolonging life, and promoting the health of the community.

Where to Find Us

KCHD's Main Clinic and Administrative Offices are centrally-located in Kent County, at 700 Fuller Avenue NE, Grand Rapids. This location near I-196 serves as headquarters for most of our public health workers. On the same campus, you will find our state-of-the-art animal shelter. Three satellite clinics provide easy access to many clinical services for residents county-wide.

(616) 632-7100

www.accessKent.com/Health



1. Main Clinic
700 Fuller Avenue NE
Grand Rapids, MI 49503



2. Animal Shelter
740 Fuller Avenue NE
Grand Rapids, MI 49503



3. Sheldon Clinic
121 Franklin SE
Grand Rapids, MI 49507



4. North County Clinic
4388 14 Mile Road NE
Rockford, MI 49341



5. South Clinic*
4700 Kalamazoo Avenue SE
Kentwood, MI 49508

GENERAL INFORMATION

Toll-free from 616 or 231 area codes
Administration/Director's Office
Animal Shelter
Community Clinical Services
Community Wellness
Environmental Health
Kent County Medical Examiner's Office
Communicable Disease/Epidemiology
Personal Health Services
WIC/Vaccines

(616) 632-7100
(888) 515-1300
(616) 632-7280
(616) 632-7300
(616) 632-7203
(616) 632-7058
(616) 632-6900
(616) 632-7247
(616) 632-7228
(616) 632-7171
(616) 632-7200

Health Department Leadership

Administrative Health Officer: Adam London, RS, MPA

Deputy Administrative Health Officer: Teresa Branson, MHA

Medical Director: Mark Hall, MD

Finance Director: Gail Brink, CPA

Community Clinical Services Director: Christopher Bendekgey

Community Wellness Director: Joann Hoganson, RN, MSN

Environmental Health Director: Eric Pessell, REHS

2015 Community Health Advisory Committee

Commissioner Shana Shroll
(Chairperson)

Commissioner Emily Brieve

Stephen Alsum

Mishelle Bakewell

Denise Garman

Paul Haan

Ron Koehler

Nora Norton

Dr. Lori Pearl-Kraus

Savator Seldon-Johnson

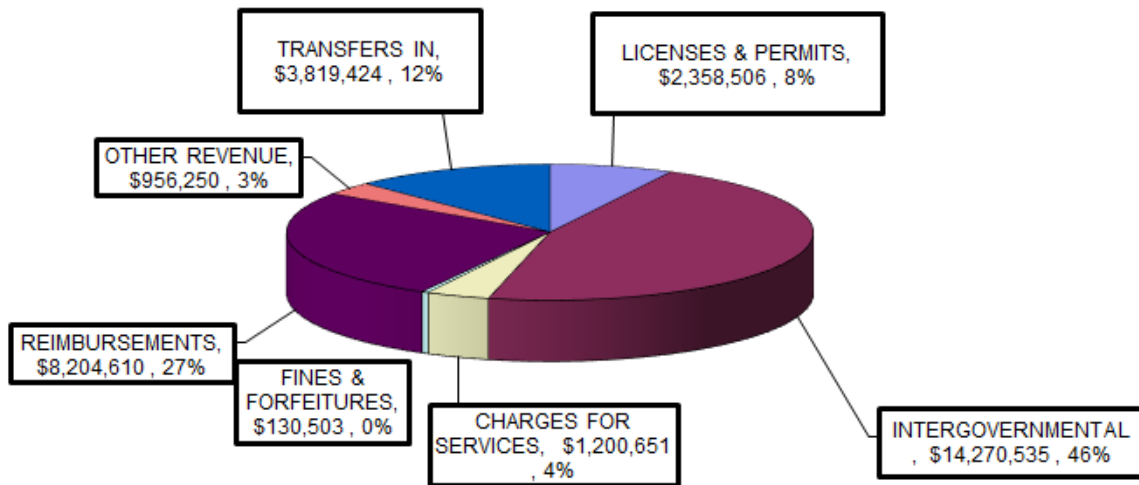
Dr. Mark Swan



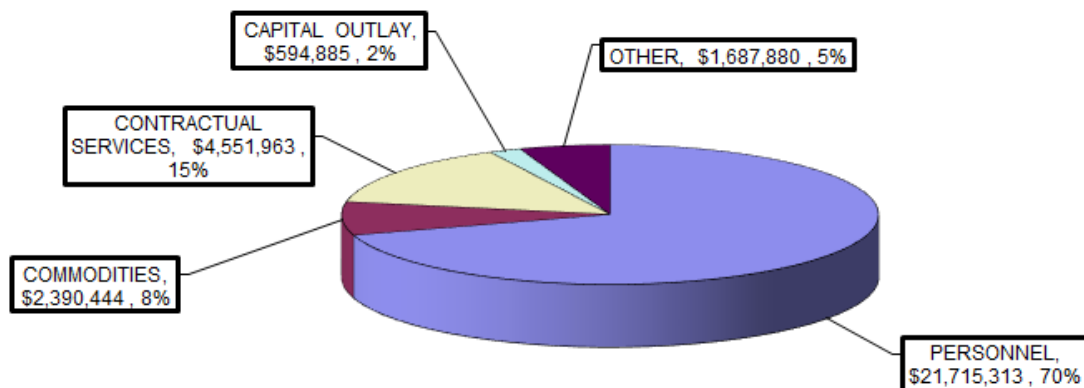
2015 Community Outreach Kid's Day at The Zoo

2015 Budget

2015 KCHD REVENUES 15 months



2015 KCHD EXPENSES 15 months



Administration

Administration of Department
Central Supply
Emergency Preparedness
Epidemiology and Communicable
Disease
Finance

Health Equity and Social Justice
Healthy Kent
Information Technology
Quality Improvement and
Performance Management
School Illness Reporting

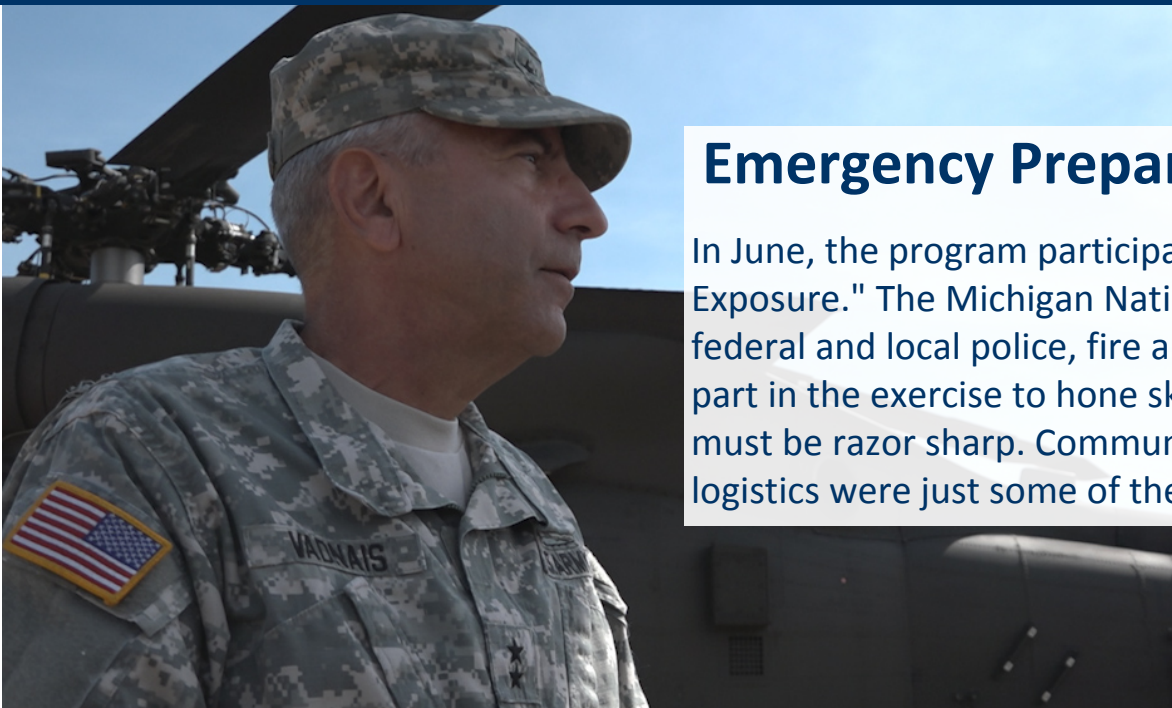
Oversight and planning starts in Administration. Epidemiologists, program managers, communications, emergency preparedness, finance and information technology make up this division. Administration sets quality improvement goals and establishes the overall direction and vision of the Kent County Health Department.



IN 2015 KCHD Epidemiologists monitored 48 travelers returning to Kent County from West African countries that were involved in the Ebola outbreak.

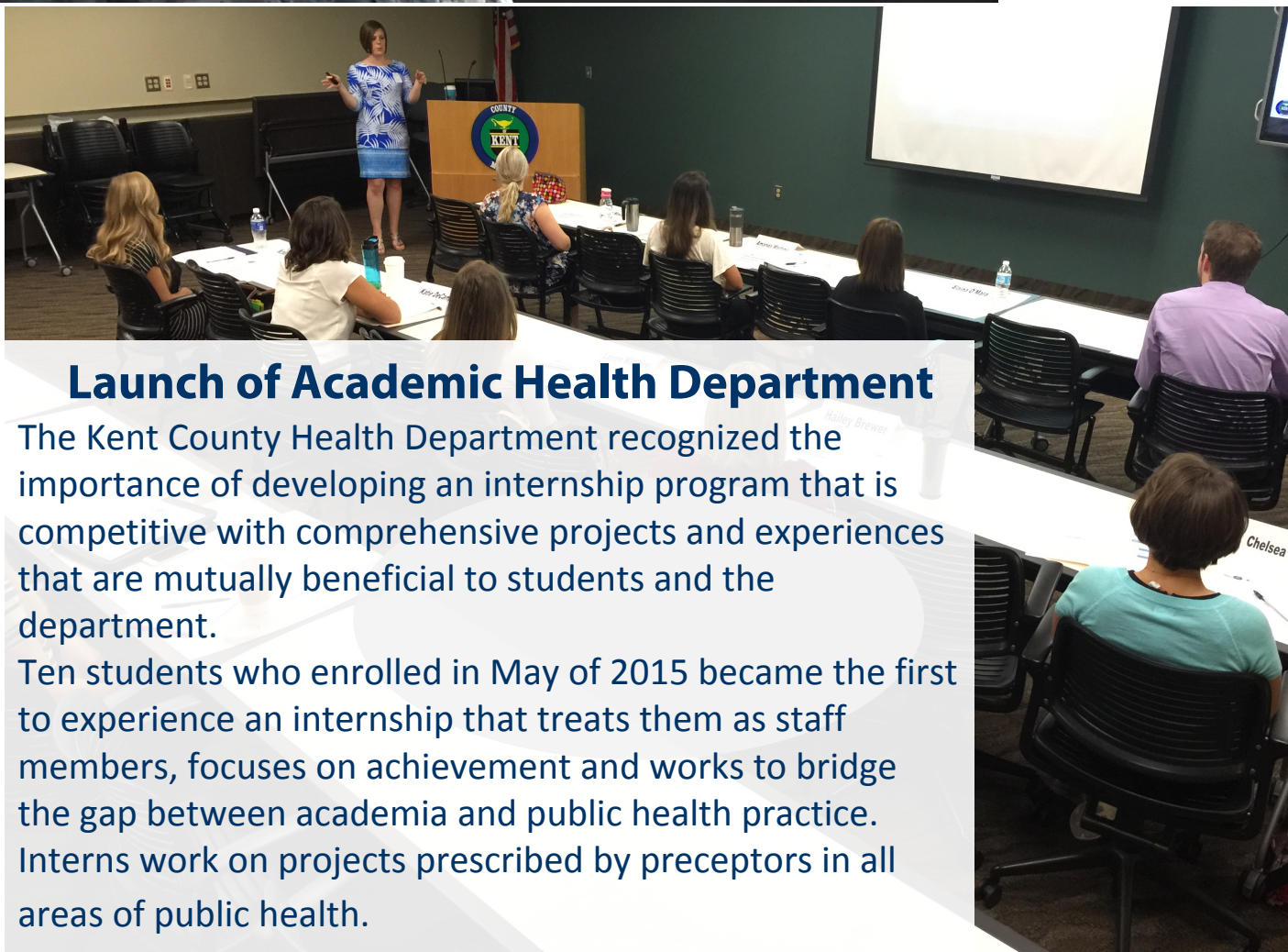
The group also published the 2014 Behavioral Risk Factors Study and the 2014 Kent County Community Health Needs Assessment that provides updated health indicators and priorities for Kent County.

Administration



Emergency Preparedness Program

In June, the program participated in "Northern Exposure." The Michigan National Guard and multiple federal and local police, fire and rescue agencies took part in the exercise to hone skills that in an actual crisis must be razor sharp. Communications, operations and logistics were just some of the areas put to the test.



Launch of Academic Health Department

The Kent County Health Department recognized the importance of developing an internship program that is competitive with comprehensive projects and experiences that are mutually beneficial to students and the department.

Ten students who enrolled in May of 2015 became the first to experience an internship that treats them as staff members, focuses on achievement and works to bridge the gap between academia and public health practice. Interns work on projects prescribed by preceptors in all areas of public health.

Community Clinical Services

School Immunization Reporting

Immunization Nurse Educator
In-services

Immunization Services

Public Health Clinics

Sexually Transmitted Infections & HIV
Clinic

Tuberculosis Control and Prevention

Vaccine For Children Program

WIC (Special Supplemental Food Program
for Women, Infants, and Children)

Breastfeeding Peer Counselor Program

Travel Immunizations

Lead Screening

Community Clinical Services provides immunizations, the Special Supplemental Nutrition Program for Women, Infants and Children (WIC), breastfeeding education, nutrition education, sexually-transmitted infection (STI) testing, and much more. Counseling and assistance from a variety of programs are designed to prevent disease and promote good health.



A new Michigan rule requiring parents/guardians to obtain a non-medical waiver for required school/childcare immunizations from a local health department went in effect in January 2015.

The result was a significant decrease in the number of waivers across the state. The state's school waiver rates dropped from 4.6% to 2.8%.

Waiver rates in Kent County decreased from 2.74% to 1.76%.

Kent County Immunization Rates increase in 2015.

More children are being vaccinated and protected from vaccine-preventable diseases.

Community Clinical Services

Immunizations Keep Kids, Adults Healthy

- 16,615 Immunization visits:
 - 422 visits for international travel
 - 30,871 doses of vaccine administered
- 281 Kent County schools reported at 99% compliance for 32,240 children.
- 224 Child care centers reported at 98% compliance for 14,240 children.
- 1,817 Visits for TB testing.
- 44 Vaccines for Children (VFC) office audits.
- 28 Immunization Nurse Educator trainings provided.



Personal Health Services

- 4,894 Client visits.
- 4,241 Sexually Transmitted Infection tests.
- 653 Tuberculosis tests.
- 3,032 HIV tests conducted.
- 100% Newly diagnosed HIV+ clients received counseling, results, and a risk reduction plan.

Community Wellness

Maternal Infant Health Program

Strong Beginnings

Nurse Family Partnership

Children's Special Health Care Services

Vision & Hearing Screening

Infant & Child Death Counseling

NICU Follow-up Visits

Lead Poisoning Prevention

Refugee Health

**Medicaid Enrollment and
Coordination**

Interconception Care Program

Community Nutrition

Life Skills

Obesity Initiative

Sexual Violence Prevention

Substance Abuse Prevention

Teen Pregnancy Prevention

Women's Health Network

Community Wellness builds healthy foundations for youth and families in Kent County. Nurses, dietitians, social workers, clerks, community health workers, public health educators and vision and hearing technicians provide services to a diverse population throughout Kent County. Staff members work with parents and children, often in their homes, to make sure they are leading healthy lives.

Women's Health Network

The Kent County Breast and Cervical Cancer Control Program now serves Kent, Ottawa, Muskegon and Barry Counties.

1,180 screenings completed.

472 Diagnostics performed

71 Cancers detected.

Community Wellness



Helping Our Children

875 families were offered support, encouragement, education and help getting needed resources through the Strong Beginnings program. This program offers services to pregnant women, their partners, and their children under two years of age. Efforts are focused on African American and Latino families and programs are offered in English and Spanish. KCHD is proud to be a partner of this collaborative program in our county.

Making You Move

KCHD received two major grants promoting more active lifestyles in Grand Rapids neighborhoods:

- REACH – Racial and Ethnic Approaches to Community Health is a four-prong approach to help fight chronic illness.
- Active Living grant from the Michigan Department of Community Health and Human Services to add walking routes in Roosevelt Park, Garfield Park and Grandville Avenue areas to promote physical activity.

Health Equity & Social Justice Dialogue Workshops

- 76 people attended in 2015.
- Mandatory for all KCHD staff.
- Trainings made available for staff from other county departments and community partner agencies.

Environmental Health

Animal Shelter
Body Art Facility Inspections
Campground Inspections
Child Care/Adult Foster Care Facility Inspections
Food Service Sanitation
Housing Program
Laboratory Services
Land Development (Subdivisions and Site Condominiums)

Nuisance Control Program
Private Water Supply
Public Swimming Pools
Public Water Supply
Radon Testing
Sanitary Facility Evaluation
Sewage Disposal System Regulation
Toxic Substance Control
Vacant Land Evaluation

Environmental Health programs cover a wide spectrum. This division protects people from illness and injury by assuring the quality of regulated environments. This division also oversees a lab and the Kent County Animal Shelter.



Safe Dining

With over 3,000 routine audits, hundreds of complaint investigations and several hundred more follow ups, the sanitarians at the Kent County Health Department had a very busy 2015. Here Kathryn Sweeney takes time out at Festival of the Arts to talk to WOOD TV 8

Environmental Health

New Equipment Improves Water Testing

Laboratory facilities at the Kent County Health Department are on the *grow* in 2015 with the purchase of two new pieces of equipment.

The first is a fully automated partial chemistry analyzer which will help keep up the current need for water testing. The second is an atomic absorbance spectrophotometer. It is able to test for soft metals including arsenic, copper and lead.

The decision to purchase the equipment was based on an ever increasing demand for lead testing, mainly associated with the sale of real estate.

Testing numbers continue to increase.

West Nile Virus

KCHD received a State grant to increase mosquito surveillance in 2015. Staff found several locations where mosquitoes were carrying West Nile Virus. KCHD shared that information with municipalities to better inform eradication efforts.

Environmental Health

Kent County Animal Shelter Breaks Record

The Kent County Animal Shelter's "Home for the Holidays" event capped off a record year for adoptions. 1,116 adoptions were completed in 2015 beating the previous record of 1,027 set in 2014.



The Kent County Animal Shelter was honored as "Shelter of the Year" by the Michigan Association of Animal Control Officers.



KCAS Volunteer program grew from 5 to 50.
Massive renovations to adoptable cat area.
An x-ray machine was added to help
diagnose and treat animals.

REACH Grant Promotes Healthy Lifestyles



2015 was an important year for the REACH grant. In 2014, The Kent County Health Department received a \$2.2 million from the Centers For Disease Control and Prevention as part of the Racial and Ethnic Approaches to Community Health three year grant. The funding is dedicated to improving the health of individuals living within areas of Grand Rapids known as "Hope Zones."

REACH expanded its footprint in 2015 into the Roosevelt Park Neighborhood and established programs aimed at tobacco cessation, healthy eating and active living.

The biggest success came through cooperation and partnerships when local corner stores began regularly stocking fresh fruits and vegetables based on the increased demand from regular customers who had been influenced by REACH.



DIVERSITY AND INCLUSION MATTER

Education

Refugee Health Services

Violence Prevention

OPPORTUNITIES

Housing Regulations & Sanitation

Children's Special Health Care Services

Development

COMMUNITY NURSING

Immunizations

Health Equity

Public Laboratory



HEALTH DEPARTMENT

Caring today for a healthy tomorrow

Prevention

Animal Control

Well Water Testing

MATERNAL INFANT HEALTH PROGRAM

WIC

Food Facility Inspections

Emergency Preparedness

Communicable Disease

Personal Health Services

ENVIRONMENTAL HEALTH

Ground Water Protection

Nurse Family Partnership

Community Clinical Services

Exceptional Public Service

Making a positive contribution

IMPROVING LIVES

And More....

...a look at our efforts to keep Kent County Healthy!



700 Fuller Ave. NE
Grand Rapids, MI 49503
accessKent.com/Health