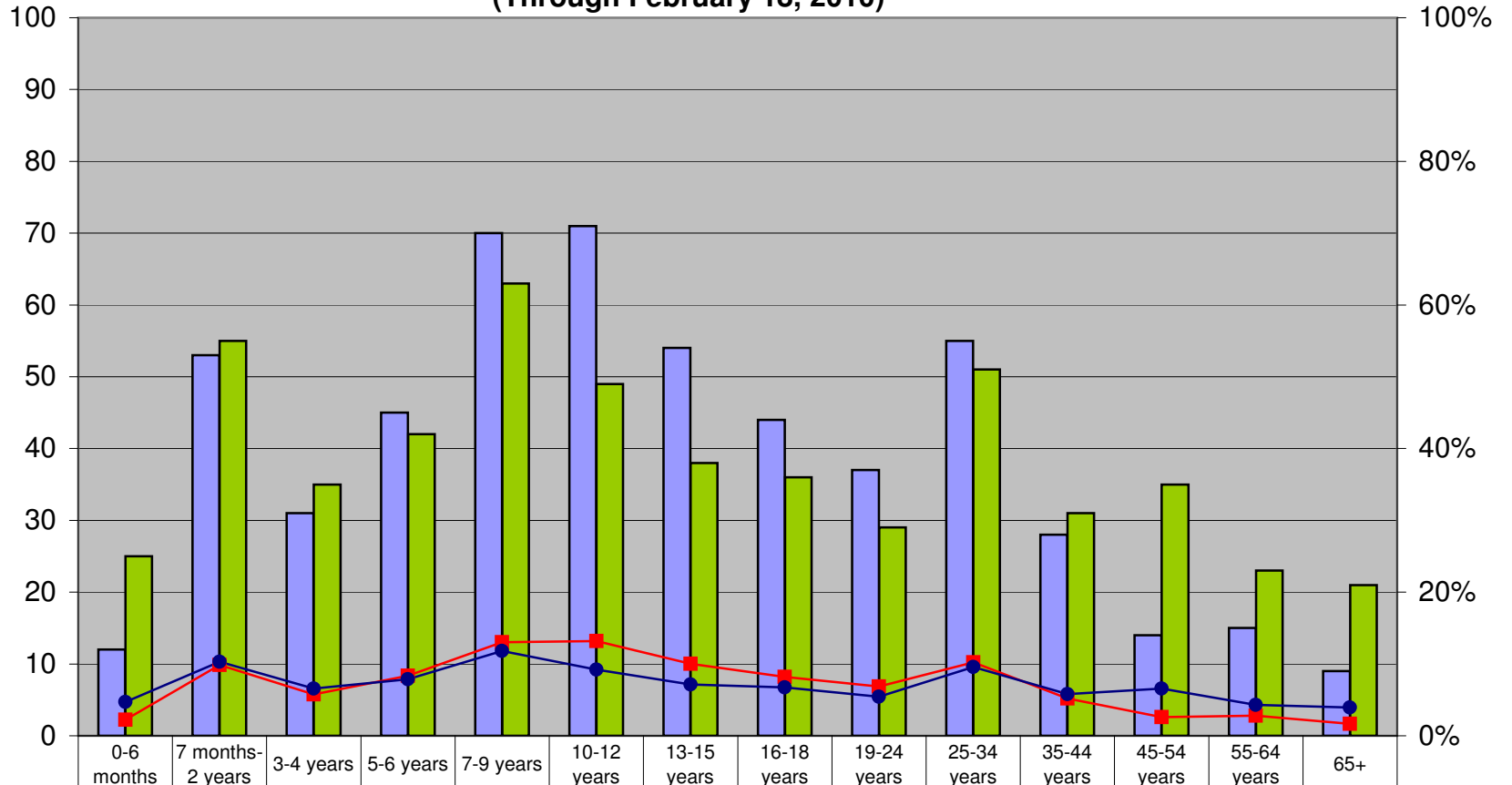


Confirmed Cases of Influenza by Age Group 2008-2009 season versus 2009-2010 season (Through February 18, 2010)



■ 2008-2009	12	53	31	45	70	71	54	44	37	55	28	14	15	9
■ 2009-2010	25	55	35	42	63	49	38	36	29	51	31	35	23	21
■ 2008-2009 %	2.2%	9.9%	5.8%	8.4%	13.0%	13.2%	10.0%	8.2%	6.9%	10.2%	5.2%	2.6%	2.8%	1.7%
● 2009-2010 %	4.7%	10.3%	6.6%	7.9%	11.8%	9.2%	7.1%	6.8%	5.4%	9.6%	5.8%	6.6%	4.3%	3.9%