

Emergency Air-Conditioning Assistance Flow Chart
(Need must be health related)

United Way's 2-1-1
Call for Information and Referral
211 or (616) 459-2255

Hospice of Michigan
1-800-642-4021
(Only if Terminal Illness)

Department of Human Service (DHS)
State of Emergency Relief Funds
247-6000
(Must be health related)

Veterans Trust Fund
(616) 365-3899
War Time Vet/Widow

Soldier's and Sailor's Relief
(616) 336-3492
War Time Vet/Widow

Area Agency on Aging of West Michigan
(616) 456-5664

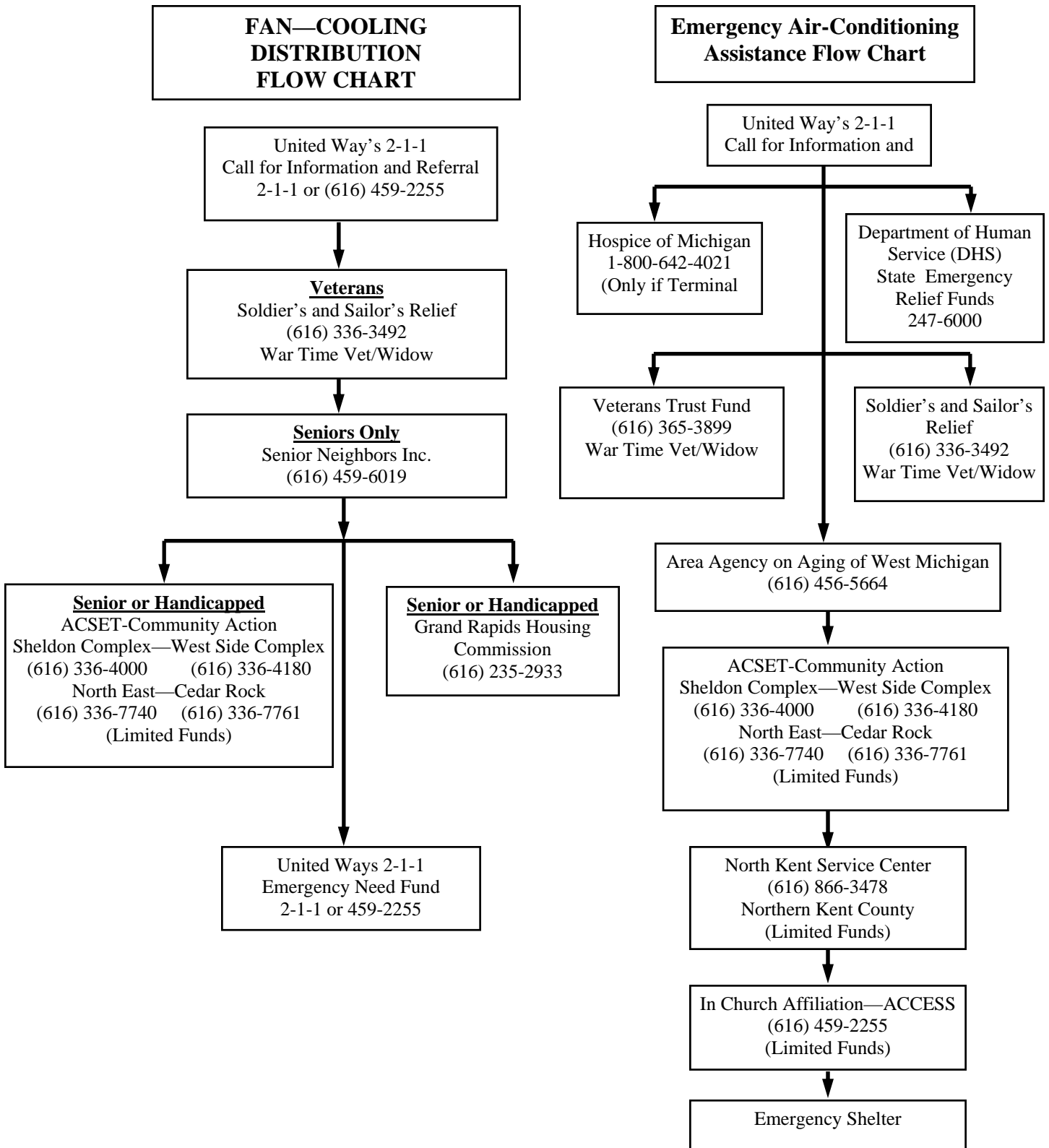
ACSET-Community Action
Sheldon Complex—West Side Complex
(616) 336-4000 (616) 336-4180
North East—Cedar Rock
(616) 336-7740 (616) 336-7761
(Limited Funds)

North Kent Service Center
(616) 866-3478
Northern Kent County
(Limited Funds)

In Church Affiliation—ACCESS
(616) 459-2255
(limited Funds)

Emergency Shelter

COOLING ASSISTANCE



**Electric Shut Off
Flow Chart**

United Way's 2-1-1
Call for Information and Referral
2-1-1 or (616) 459-2255

Utility Provider
Payment Arrangement/Budget

Active Public Assistance Household
Contact On-Going Worker for SER
Department of Human Services (DHS)

Non-Public Household
Apply for SER
Department of Human Service (DHS)

Veteran's Trust Fund
(616) 365-3899
War Time Vet/Widow

Soldier's and Sailor's Relief
(616) 336-3492
War Time Vet/Widow

Salvation Army
(616) 459-9468

ACSET-Community Action
Sheldon Complex—West Side Complex
(616) 336-4000 (616) 336-4180
North East—Cedar Rock
(616) 336-7740 (616) 336-7761
(Limited Funds)

Senior Neighbors Inc.
(616) 459-6019
(Limited Funds)
Seniors Only

North Kent Service Center
(616) 866-3478
Northern Kent County
(Limited Funds)

In Church Affiliation—ACCESS
(616) 459-2255
(limited Funds)

United Way's 2-1-1
211 or (616) 459-2255
(Limited Funds)

Emergency Shelter

**FAN—COOLING DISTRIBUTION
FLOW CHART**

United Way's 2-1-1
Call for Information and Referral



Veterans
Soldier's and Sailor's Relief
(616) 336-3492
War Time Vet/Widow



Seniors Only
Senior Neighbors Inc.
(616) 459-6019



Senior or Handicapped
ACSET-Community Action
Sheldon Complex—West Side Complex
(616) 336-4000 (616) 336-4180
North East—Cedar Rock
(616) 336-7740 (616) 336-7761
(Limited Funds)

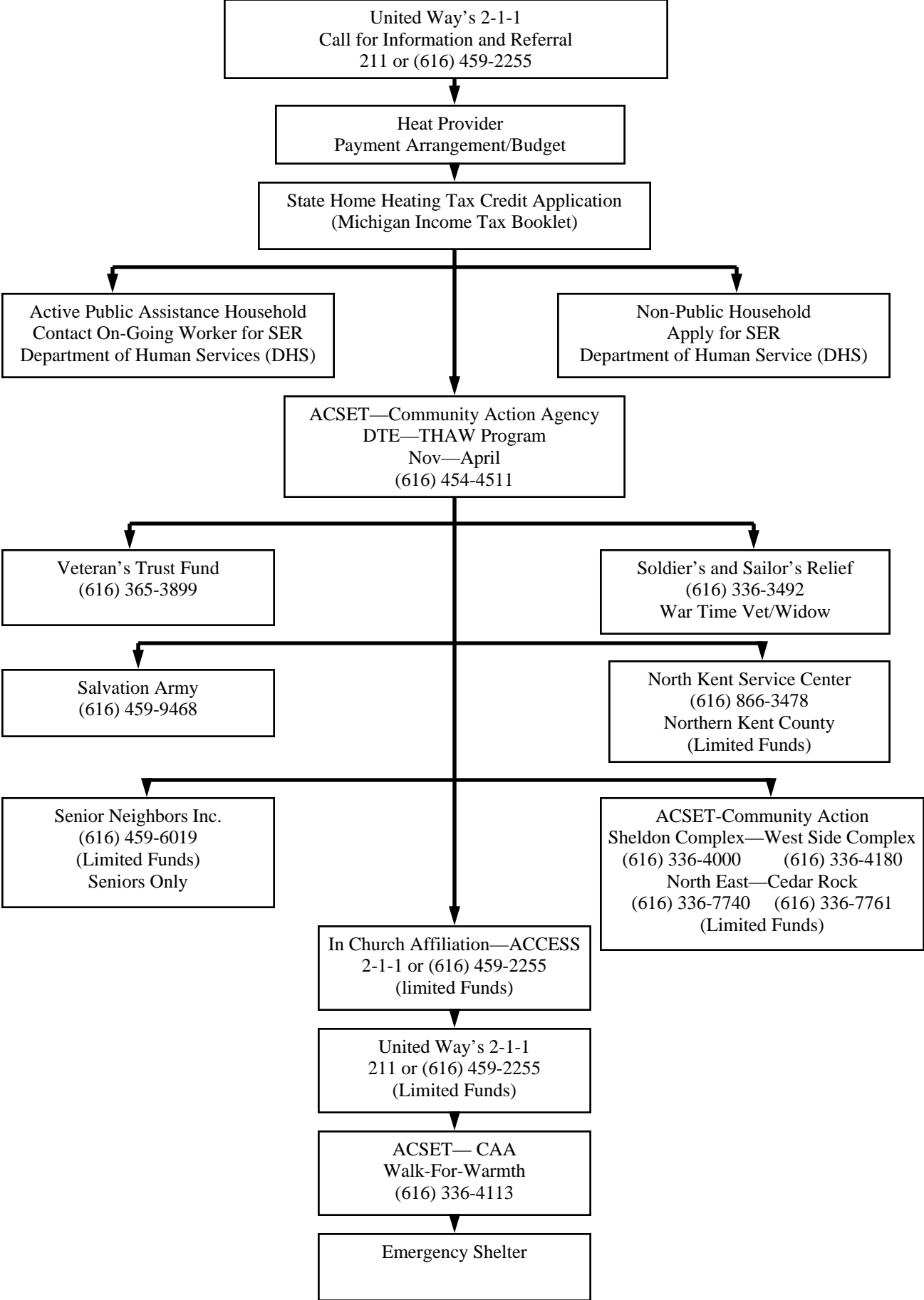


Senior or Handicapped
Grand Rapids Housing
Commission
(616) 235-2933



United Ways 2-1-1
Emergency Need Fund
2-1-1 or 459-2255

Heating Emergency Flow Chart



Water Shut-Off Flow Chart

United Way's 2-1-1
Call for Information and Referral
2-1-1 or (616) 459-2255

Utility Provider
Payment Arrangement/Budget

Active Public Assistance Household
Contact On-Going Worker for SER
Department of Human Services (DHS)

Non-Public Household
Apply for SER
Department of Human Service (DHS)

The Salvation Army
(616) 459-9468

Veteran's Trust Fund
(616) 365-3899
War Time Vet/Widow

Soldier's and Sailor's Relief
(616) 336-3492
War Time Vet/Widow

ACSET-Community Action
Sheldon Complex—West Side Complex
(616) 336-4000 (616) 336-4180
North East—Cedar Rock
(616) 336-7740 (616) 336-7761
(Limited Funds)