

## HOUSING CONTINUUM OF CARE SHELTER SUBCOMMITTEE



### PURPOSE

A community planning body promoting the prevention of and end to homelessness by developing and maintaining a system coordinating our community's resources and services for homeless and precariously-housed families and individuals.

### FACTS

- In 2003, 700-800 people a night were in shelter, a 7% increase from 2002. Services for homeless men jumped 11%.
- Permanent affordable housing demand is high: more than 7,000 Kent County families are waiting for Section 8 vouchers.
- Minimum wage for 40 hours of work provides \$268 in rent – Kent County's 2-bedroom Fair Market Rent is \$636.

### 2003 ACCOMPLISHMENTS

- 140 community leaders met at a Summit, starting the *Vision To End Homelessness in 10 Years*.
- Assisted area municipalities in addressing relocation issues during large-scale rental property condemnations.
- Opened 33 Permanent Supportive Housing units, with funding for 33 more, plus 27 PSH dedicated Section 8 vouchers.

### 2004-2005 AGENDA

- Collect data through the Homeless Management Information System computer network.
- Implement the *Vision To End Homelessness* plan in Kent County.
- Add Kent County to the statewide Point in Time shelter census.
- Re-engineer the Housing Continuum of Care using the *Vision* plan.

## UTILITY / CONSERVATION SUBCOMMITTEE



### PURPOSE

Assessment of services to remedy utility-related emergencies, weatherization, conservation and education.

### FACTS

- Over the last year, funding doubled at \$2,878,000, helping 47% more clients.
- Severity of need is increasing: 87% are at a poverty level, and those employed declined from 45% in 2001 to 33% in 2003.
- Prevention increased 28% to \$777,000 in 2003.

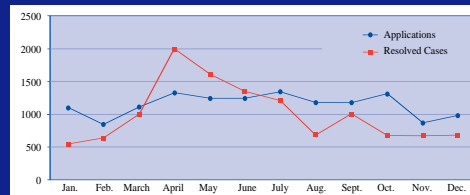
### 2003 ACCOMPLISHMENTS

- New energy conservation funding helped twice as many in 2003 versus 2002.
- System management improved with help from GVSU Seidman Business School and the 2-1-1/ENTF Basic Needs Data Group.

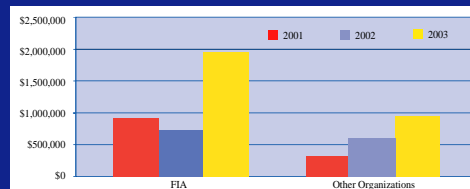
### 2004-2005 AGENDA

- Enhance referral response with web communication through 2-1-1.
- Expand Energy Conservation Workshops as a primary prevention strategy.
- Work with local data support resources.

2003 Utility Assistance Trend Applications vs. Cases Resolved



Total Dollars Distributed 2001-2003



## TRANSPORTATION SUBCOMMITTEE



### PURPOSE

Working to ensure that transportation is economically and easily available for all people to access basic needs, including medical care, employment, food, faith activities, social events, and social services.

### FACTS

- Only 55% of Kent County's primary care physicians are accessible via The Rapid line-haul services.
- The Rapid line-haul services access only 61% of major Kent County employers, with major commerce areas inaccessible.

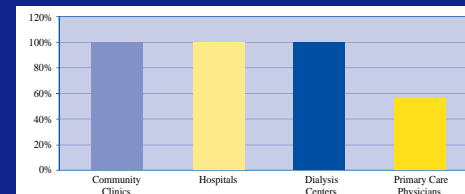
### 2003 ACCOMPLISHMENTS

- A countywide Transportation Resource Guide was drafted.
- An RFP for Single Access Medical Transportation was released through The Rapid.
- A transportation data geo-mapping process was started.
- Strongly supported the successful November 2003 dedicated Transportation Millage.

### 2004-2005 AGENDA

- Release the Transportation Resource Guide through United Way's 2-1-1, ENTF website, Medicaid HMO's and community clinics.
- Advocate for countywide public transit; land use planning incorporating public transit and coordination with contiguous counties.
- Work on "schedule-less" public transportation.

Kent County Medical Destinations Accessibility, 2003



## Kent County Emergency Needs Task Force 2003-2004 Report Update



The Kent County ENTF includes more than 100 non-profits, governmental, faith-based organizations, funders and concerned volunteer citizens who work together to address our citizens' basic needs. The ENTF monitors basic service systems in Kent County, such as food, shelter, utilities and transportation. Each ENTF member organization continues to meet emergency needs requests from Kent County residents on a daily basis.

Internet access to the full Kent County Emergency Needs Task Force 2003-2004 Report Update is available for review or printing at

[www.accesskent.com/YourGovernment/Publications/kcentf.htm](http://www.accesskent.com/YourGovernment/Publications/kcentf.htm)

or where the Kent County ENTF logo is displayed.

Funded by:



July, 2004

The ENTF continues to work diligently to make Kent County a great community in which to live. The Task Force is making exciting changes to help prevent emergency basic needs situations. The many organizations and individuals working together to help those in need have made a huge difference during this past year, and we will do even more in the upcoming year.

As we face challenging economic times and growing diversity in our community, the ENTF report recommendations can be our road map to meeting emergency basic needs.

Take the time to review the report and recommendations. Consider how you can work with others in the community to do your part. Your time or donation will help. If individuals in need ask for assistance with food, shelter or other basic support, suggest a call to United Way's 2-1-1 or take a look at the specialized referral flow charts in the web based report for specific information.

Your interest in reading the 2003-2004 Kent County ENTF Update Report is appreciated. Your involvement is needed.

Sincerely,



Joan Kraus, Chair  
Kent County Family Independence Agency

## COORDINATING COMMITTEE



### PURPOSE:

Assessment of community needs, overall publicity and long-range planning.

The Coordinating Committee, providing ENTF leadership from government, human service and faith-based sectors, met on June 2, 2004. The Committee reviewed accomplishments, basic needs demands and recommendations for continuing action.

The Committee endorsed the Subcommittee recommendations and made the following suggestions:

- Use data for management decisions and education; use long-term economic and demographic trend information and focus on indicators.
- Clarify the vision for food assistance including priorities for nutrition versus response to immediate hunger.
- Determine if homes with high utility consumption can get special attention from housing inspection, weatherization and other specialists reducing consumption.
- Change the Advocacy/Funding Subcommittee to the Leadership Subcommittee reflecting support to the ENTF.

## LEADERSHIP SUBCOMMITTEE



### PURPOSE

Providing day-to-day management support to ENTF direct service subcommittees.

### FACTS

- The Leadership Subcommittee provides ENTF support to the community collaborative. Provided are funding coordination and development, communications services, data collection through United Way's 2-1-1 and inter-committee communication.

### 2003 ACCOMPLISHMENTS

- The 2002-03 ENTF Update Report was published on the Kent County website.
- Food Committee strategic planning was funded.
- Walk for Warmth and GRACE Hunger Walk were supported.
- Quarterly data/analysis from United Way's 2-1-1/ ENTF Basic Needs Data Group educates funders and decision makers on key issues.

### 2004-2005 AGENDA

- Expand inter-committee communication and coordination.
- Develop basic needs indicators, refine data analysis and continue developing reports.
- Expand funding and continue work on basic needs advocacy issues.
- Implement basic needs public education strategies.

## FOOD SUBCOMMITTEE



### PURPOSE

Assessment of acquisition, storage, and distribution of food and related support services.

### FACTS

- Food Services decreased in 2003 when 5 programs reduced or eliminated services with declines in resources.
- The 21,000+ Food Stamp caseload reflected a 15% or 2,786 case increase over 2002, while ACCESS Food Stamp Outreach staff recruited 253 of the new cases.
- Kent County food programs could expand as much as 25% in 2004 with sufficient resources.

### 2003 ACCOMPLISHMENTS

- The Summer Family Food For Thought project successfully helped 204 families in 8 weeks, with nutrition education and hard-to-get fresh foods.
- A grassroots purchasing cooperative provided hard-to-get food and personal care items.

### 2004-2005 AGENDA

- Develop strategic planning goals with community input.
- Increase Food Committee diversity.
- Develop guidelines for safe meat and perishables distribution.

## KENT COUNTY ENTF ADDITIONAL INFORMATION

- Internet access to the full Kent County Emergency Needs Task Force 2003-2004 Update Report, including client referral flow-charts is available for review or printing at: [www.accesskent.com/YourGovernment/Publications/kcentf.htm](http://www.accesskent.com/YourGovernment/Publications/kcentf.htm) or wherever the Kent County ENTF logo is displayed. Additional copies of this brochure are available from Heart of West Michigan United Way.
- For further information contact: David Schroeder  
Heart of West Michigan United Way  
United Way Center, 118 Commerce Avenue SW, Suite 100, Grand Rapids, Michigan 49503-4106  
Phone: (616) 752-8642 E-mail: dschroeder@unitedwaycares.com Or call United Way's 2-1-1

### ENTF Funding and In-kind Support

Funding and in-kind support for ENTF operations is provided by:

Kent County Board of Commissioners,  
Kent County FIA and  
Heart of West Michigan United Way.

### New Households Receiving FIA Food Benefits in 2003

- Regular Application Process
- ACCESS Outreach

