

Lamberton Creek Drain

Board of Determination Meeting
March 2, 2023



Ken Yonker
Kent County Drain Commissioner

Why Are We Here?

- **Petition** filed by City of Grand Rapids on January 6, 2023 for *Maintenance and Improvement*
- **Michigan Drain Code** (Public Act 40 of 1956) mandates a Board of Determination meeting
- **Board** composed of 3 disinterested property owners from outside of affected municipalities
- Determine **necessity** based on public health, convenience or welfare after hearing testimony

PETITION FOR MAINTENANCE AND IMPROVEMENT PURSUANT TO CHAPTER 8 OF
ACT 40 OF THE PUBLIC ACTS OF MICHIGAN, 1956, AS AMENDED

LAMBERTON CREEK DRAIN

To the Kent County Drain Commissioner:

The undersigned is the City of Grand Rapids, Kent County, Michigan. This petition has been duly authorized by the governing body of the City of Grand Rapids and requests that the Lamberton Creek Drain be maintained and improved as provided in Chapter 8 of Public Act 40 of 1956, as amended, to alleviate drainage issues in the Drainage District.

The Lamberton Creek Drain Drainage District is located in the City of Grand Rapids, Grand Rapids Township, and Plainfield Township, Kent County, Michigan.

The proposed maintenance and improvement is necessary for the public health, convenience or welfare and benefits the public health in the City of Grand Rapids.

The City of Grand Rapids will be liable for an assessment at large against it for a percentage of the cost of the proposed maintenance and improvement.

CITY OF GRAND RAPIDS

DocuSigned by:



E50711028E1A4E9

Rosalynn Bliss, Mayor
City of Grand Rapids

1/6/2023

Date

DocuSigned by:



D8F73BB4D3CD44E

Joel Hondorp, Clerk
City of Grand Rapids

1/6/2023

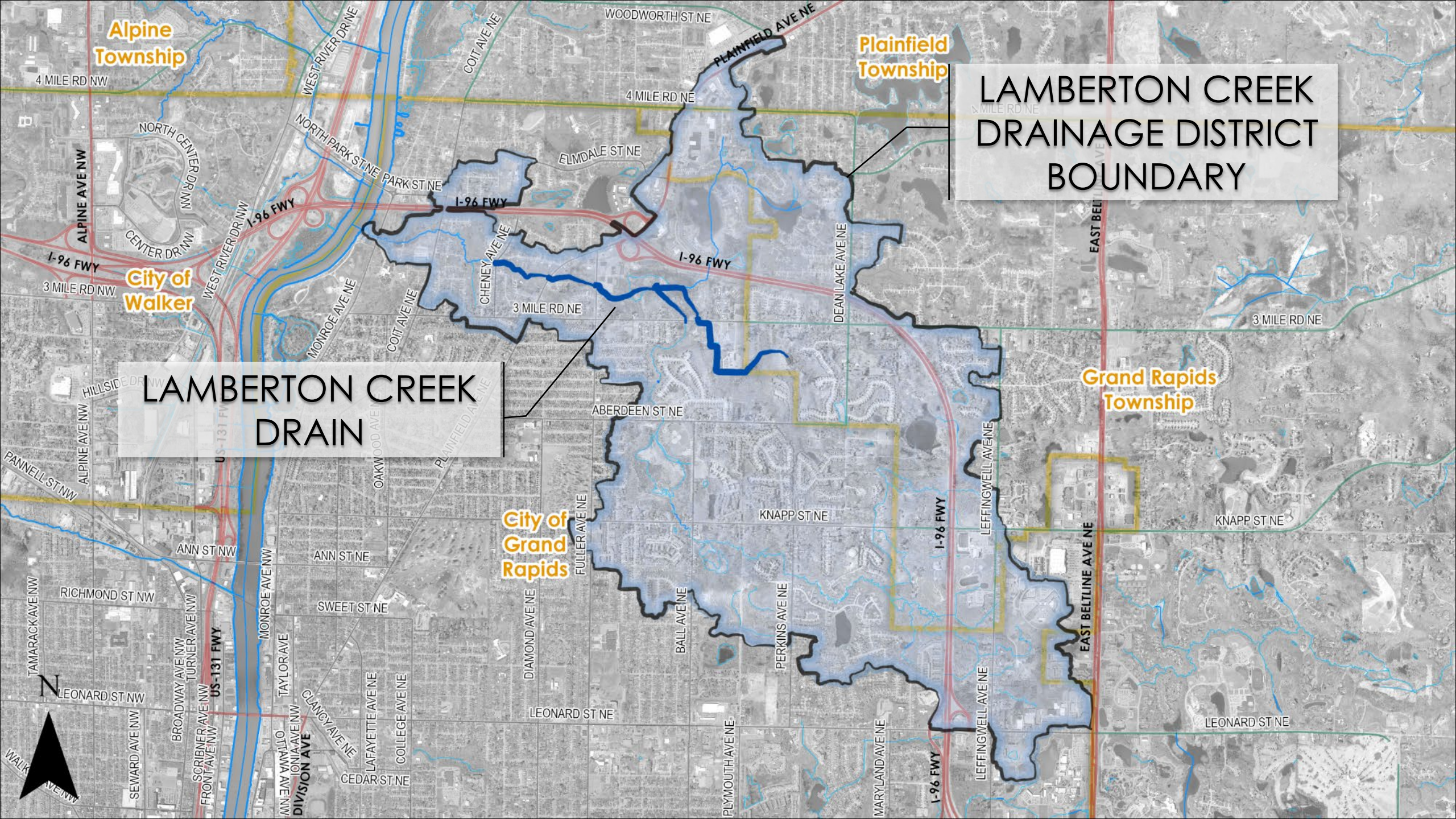
Date



Please Note:

- Function of the Board of Determination is ***to determine whether a problem exists and whether a project is necessary.***
- If voted necessary, then the drain commissioner is responsible for assessing possible solutions.
- This hearing ***does not*** address scope or corresponding costs of any potential project.
- No project has been decided; ***no assessments known.***





Alpine Township

Plainfield Township

LAMBERTSON CREEK DRAINAGE DISTRICT BOUNDARY

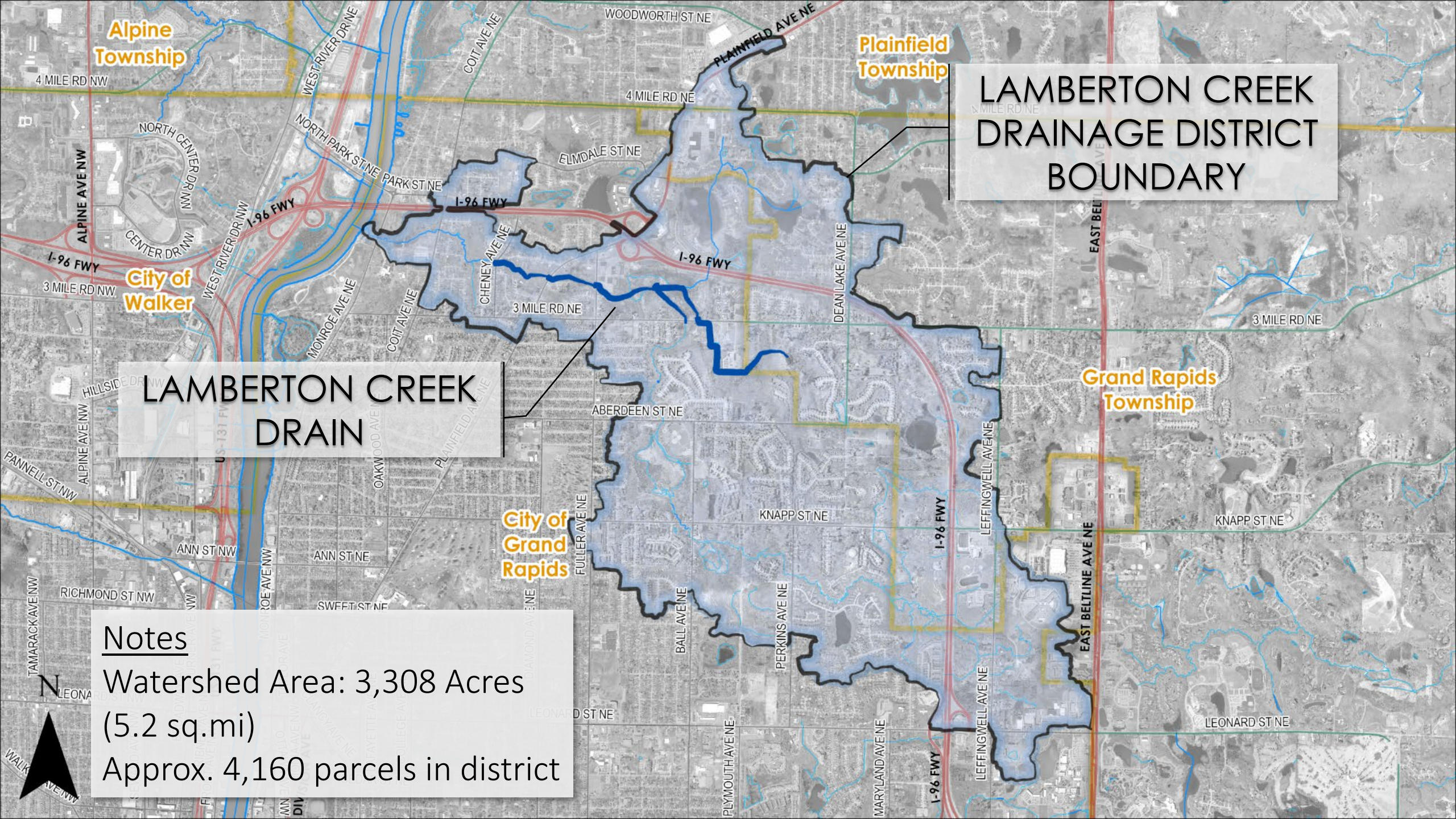
City of Walker

LAMBERTSON CREEK DRAIN

Grand Rapids Township

City of Grand Rapids





LAMBERTSON CREEK
DRAINAGE DISTRICT
BOUNDARY

LAMBERTSON CREEK
DRAIN

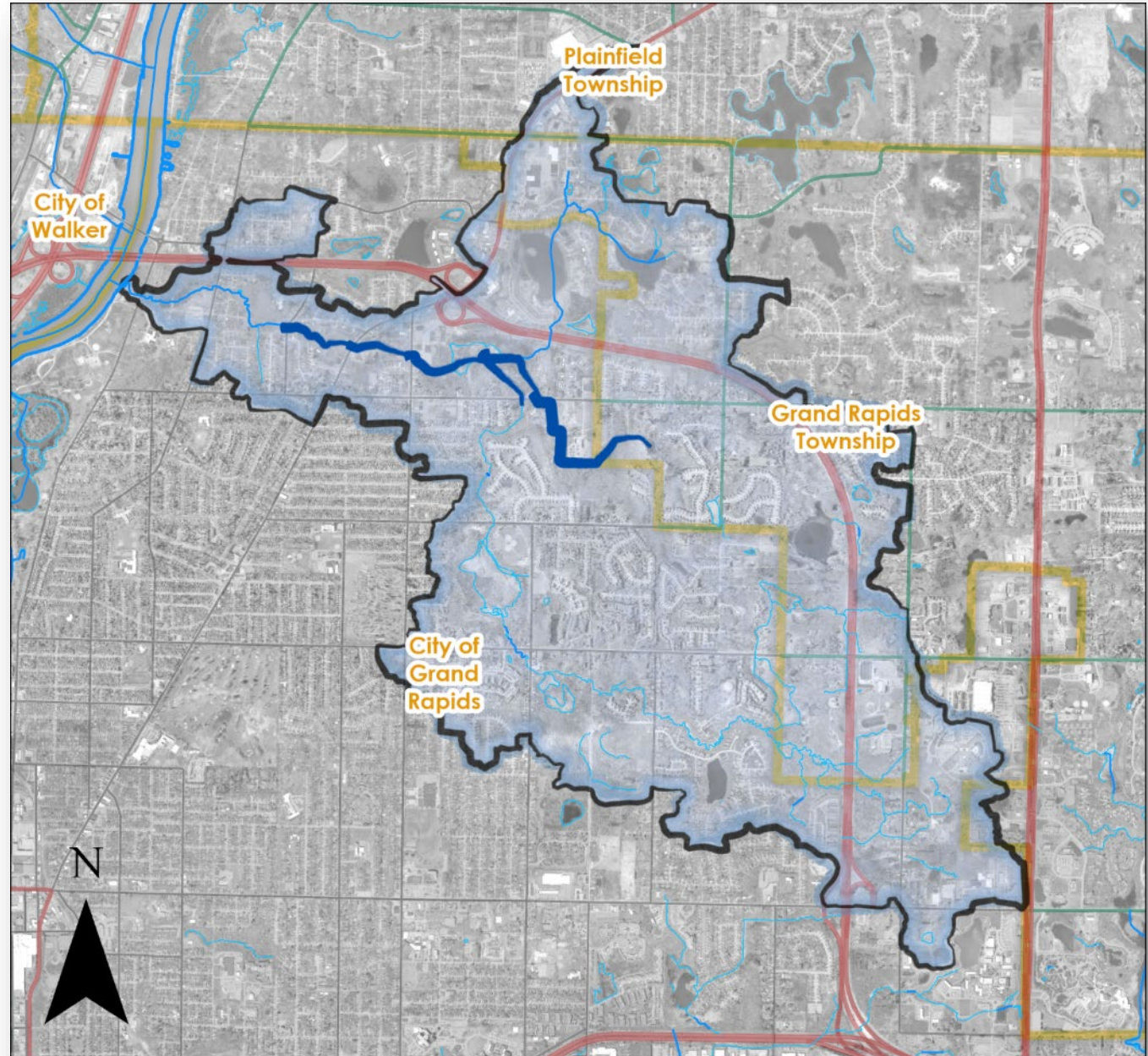
Notes
Watershed Area: 3,308 Acres
(5.2 sq.mi)
Approx. 4,160 parcels in district



Background

Lamberton Creek Drain
established in 1924
Drain limits extended
downstream to Cheney Avenue
in 1935

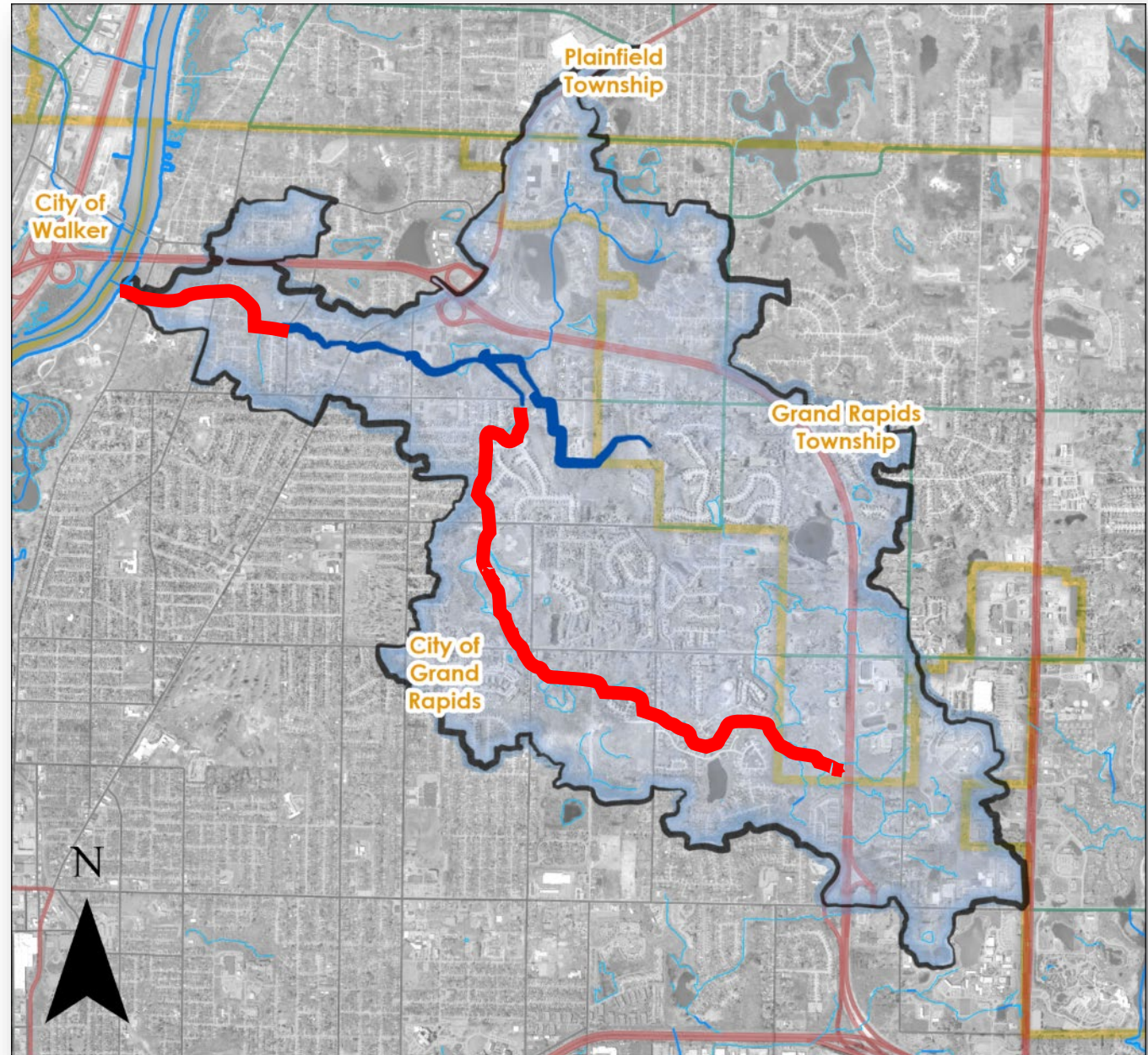
Recent maintenance completed
2011 (Erosion repair)
2016 (Woody debris removal)



Background

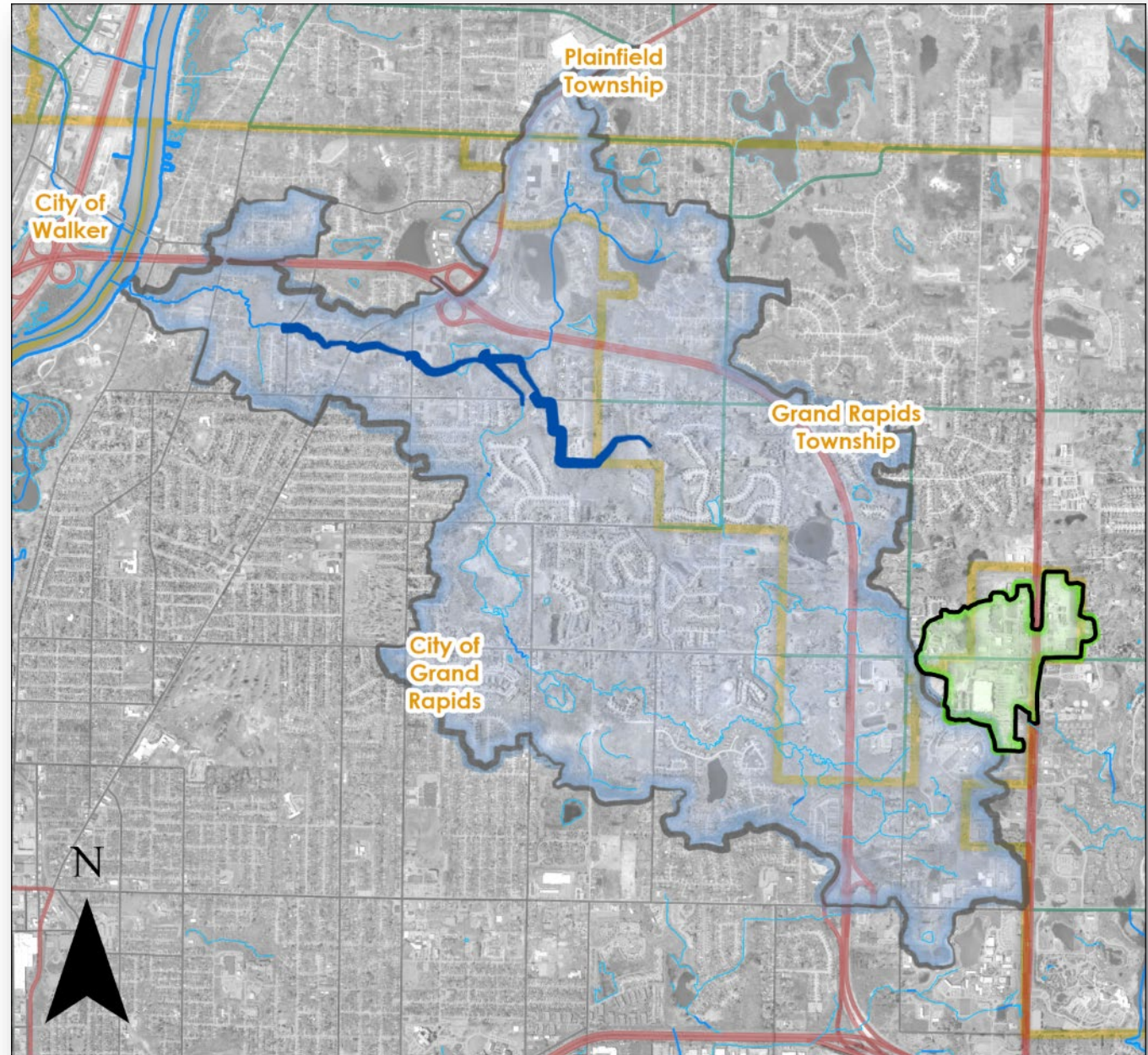
Lamberton Creek Drain
established in 1924
Drain limits extended
downstream to Cheney Avenue
in 1935

Upstream and Downstream
portions not established as
county drain



Knapp's Corner Drain

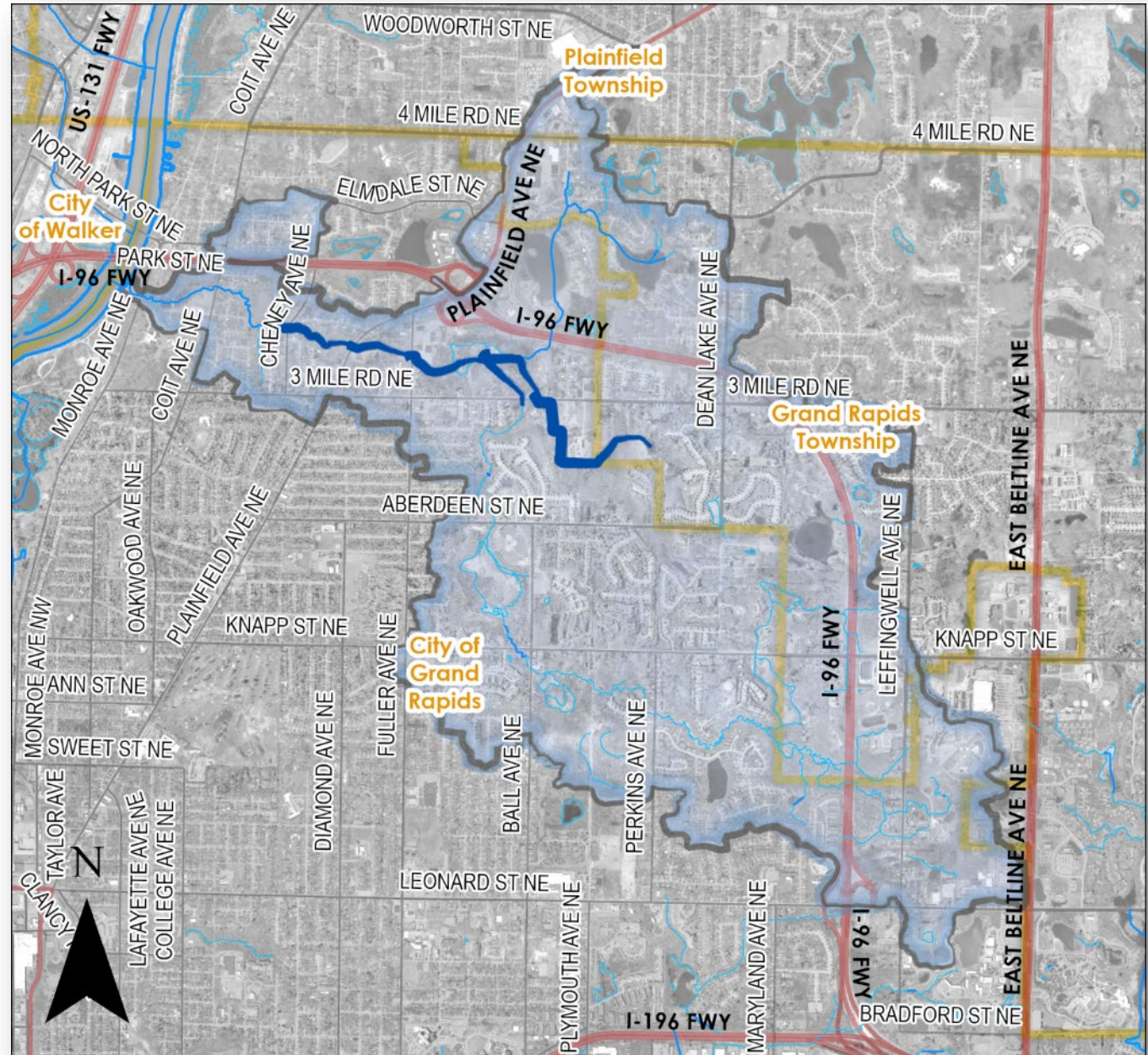
- Storm water system and retention basin with no outlet
- Evaluated options in all directions



Lamberton Creek

Reviewed each crossing

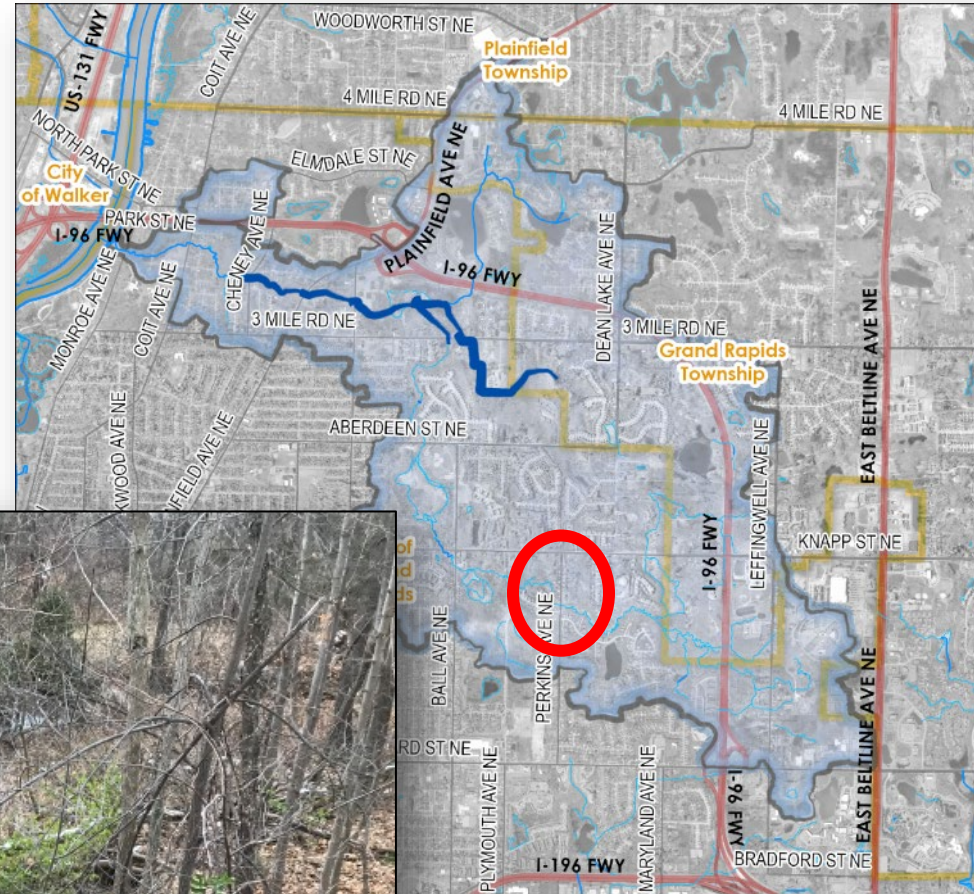
- Field measurements of culvert sizes
- Visual assessment of channel bed and bank material
- Visual observation of channel entrenchment or incisions, undercutting, sloughing, and widening of channel
- Visual observation and measurement of scour



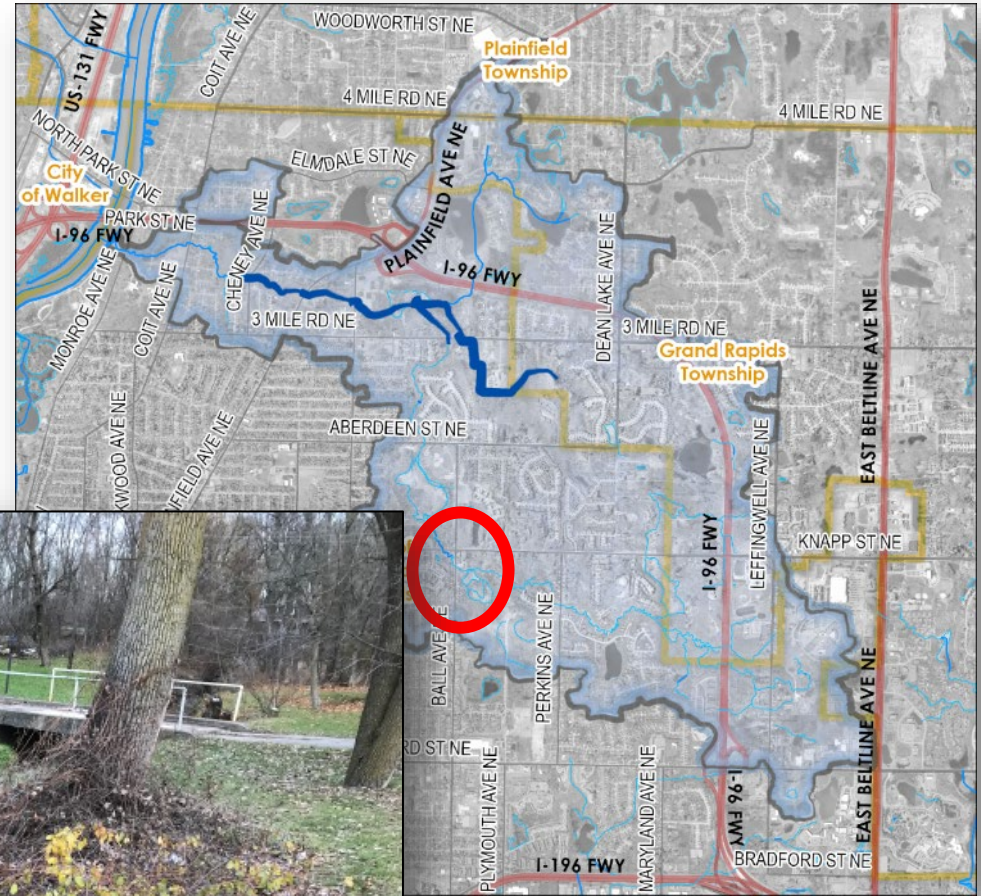
Inspection – Perkins Avenue



Woody debris, undersized culvert, erosion



Inspection – Ball Avenue



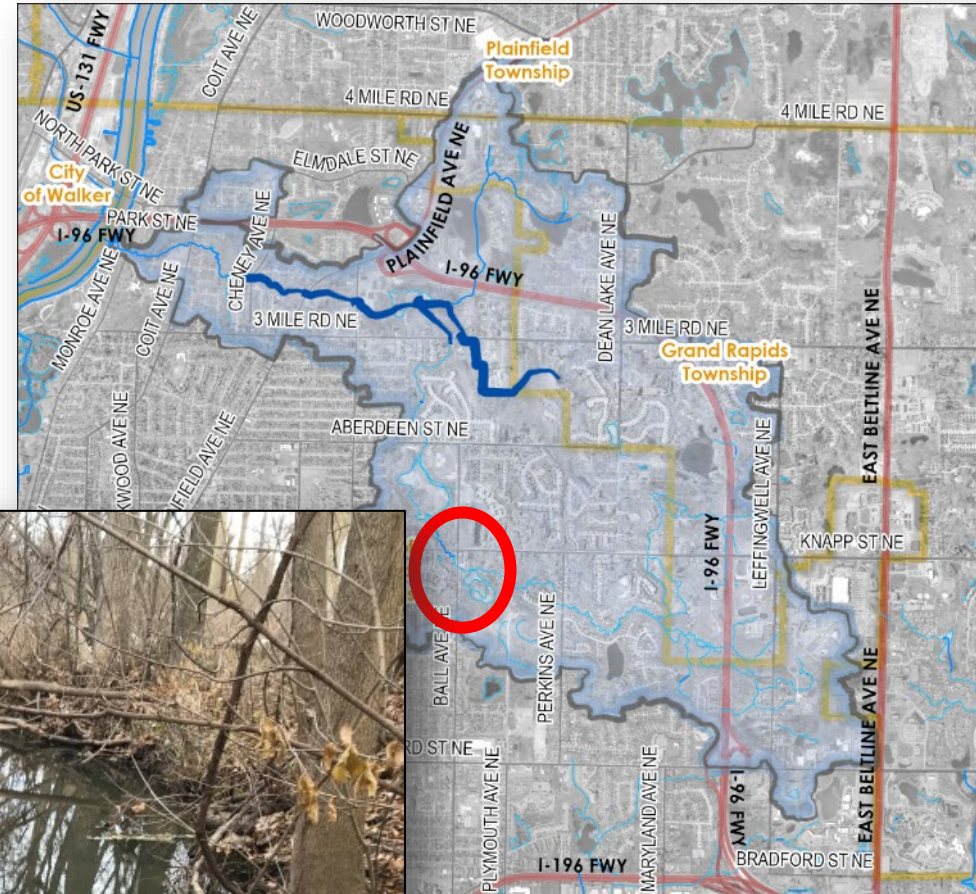
Undersized culvert, erosion



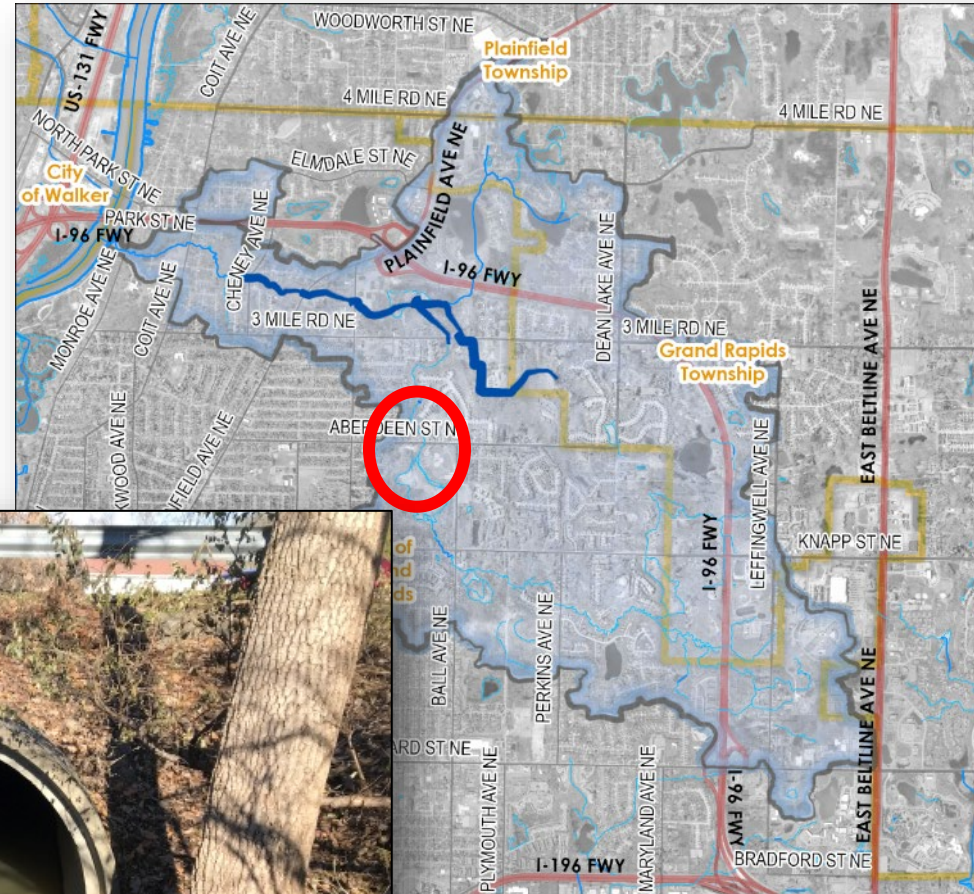
Inspection – Knapp Street



Incised banks, woody debris



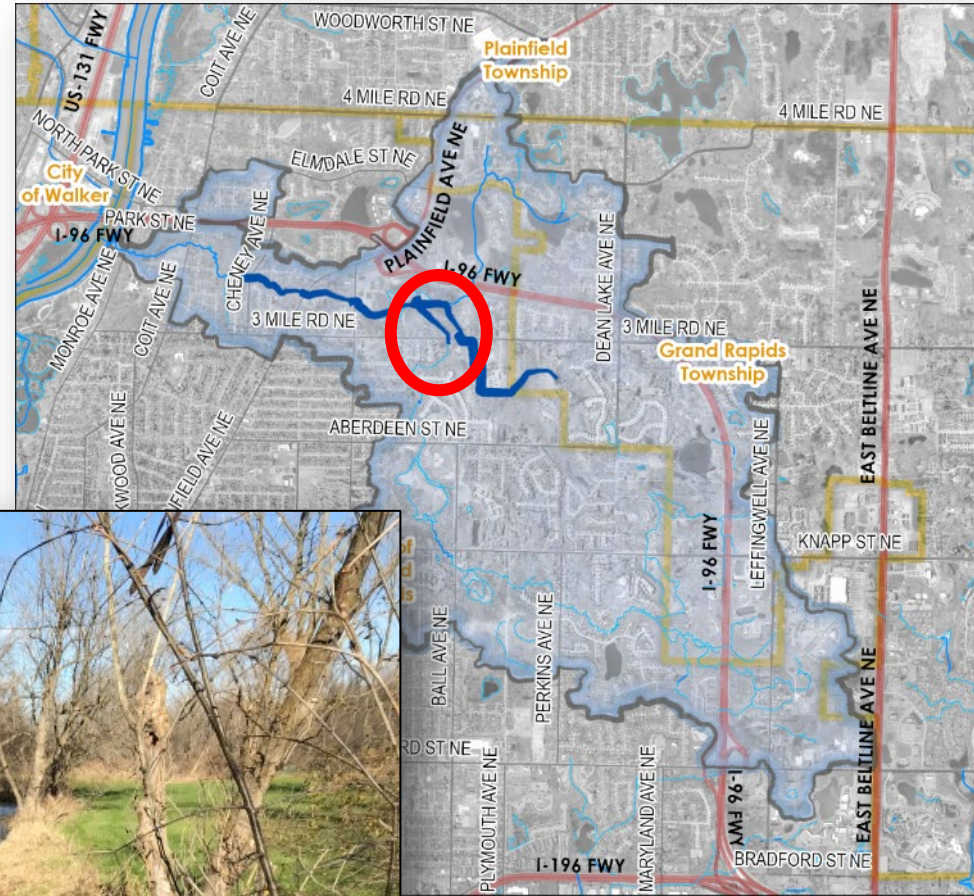
Inspection – Aberdeen Street



*Major bank erosion
Undersized culvert laid
backwards*



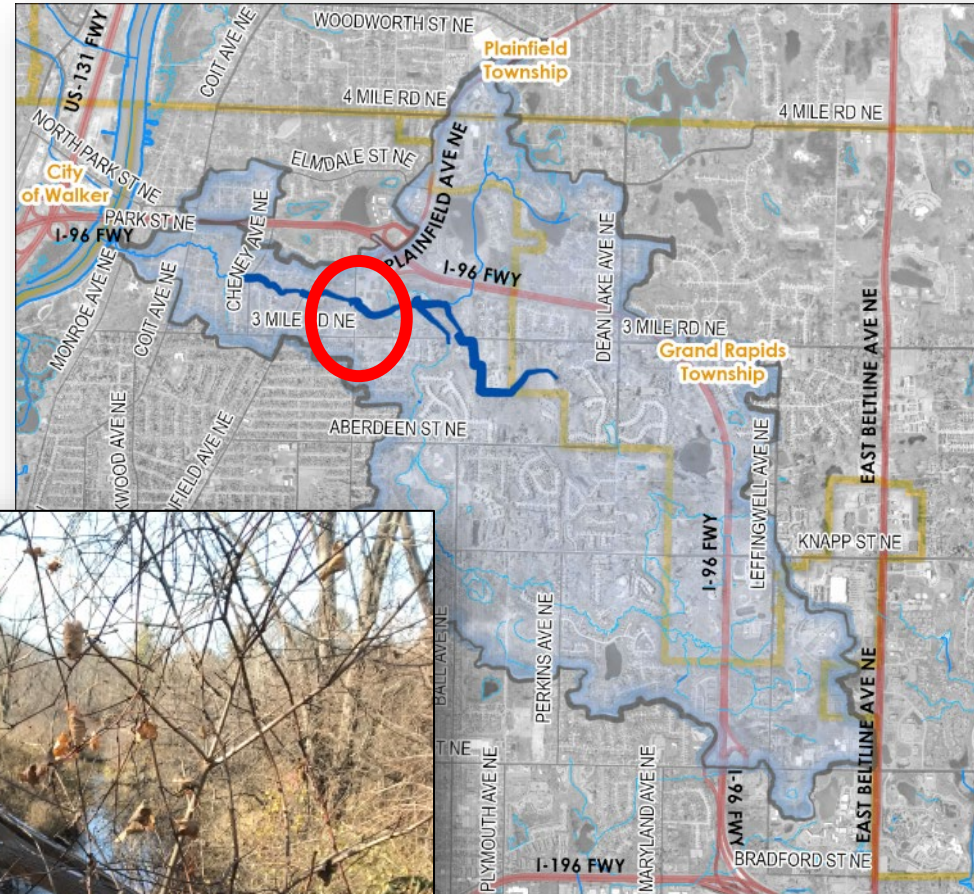
Inspection – 3 Mile Rd



*Major bank erosion,
undersized culvert,
laid backwards*



Inspection – Fuller Avenue



*Both sides underwater
Sediment built up downstream*



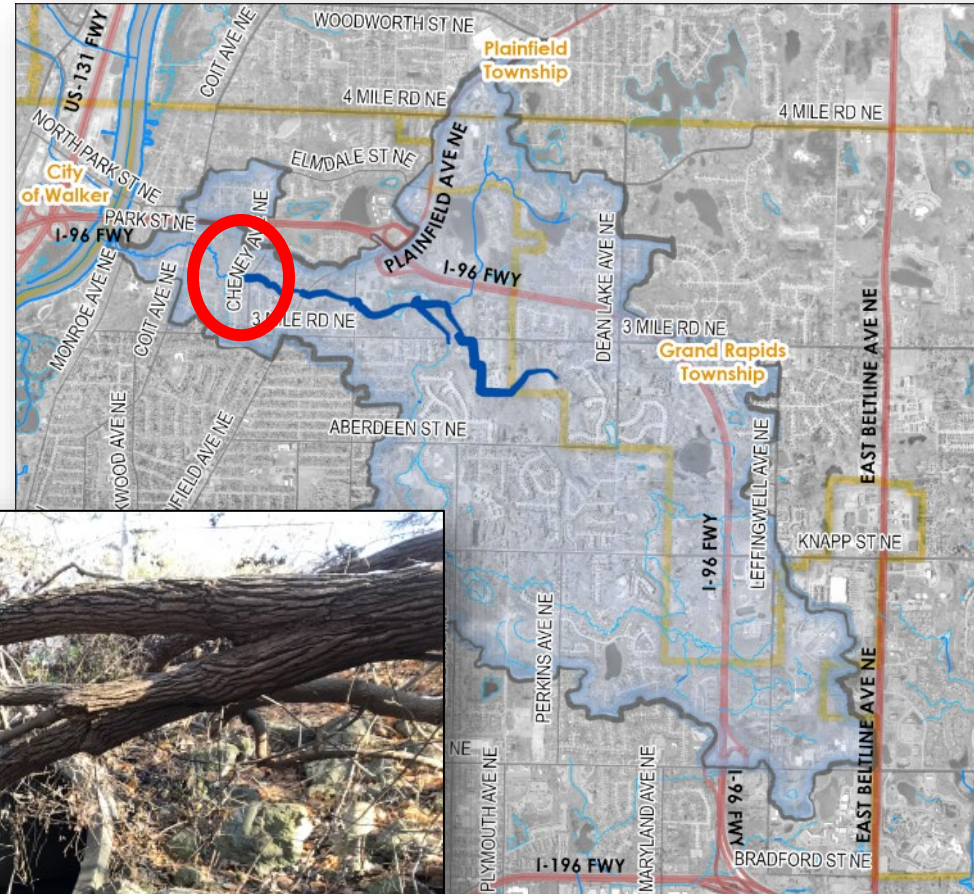
Inspection – Plainfield Avenue



Undersized culvert
Interior obstructions
Downstream erosion



Inspection – Cheney Avenue



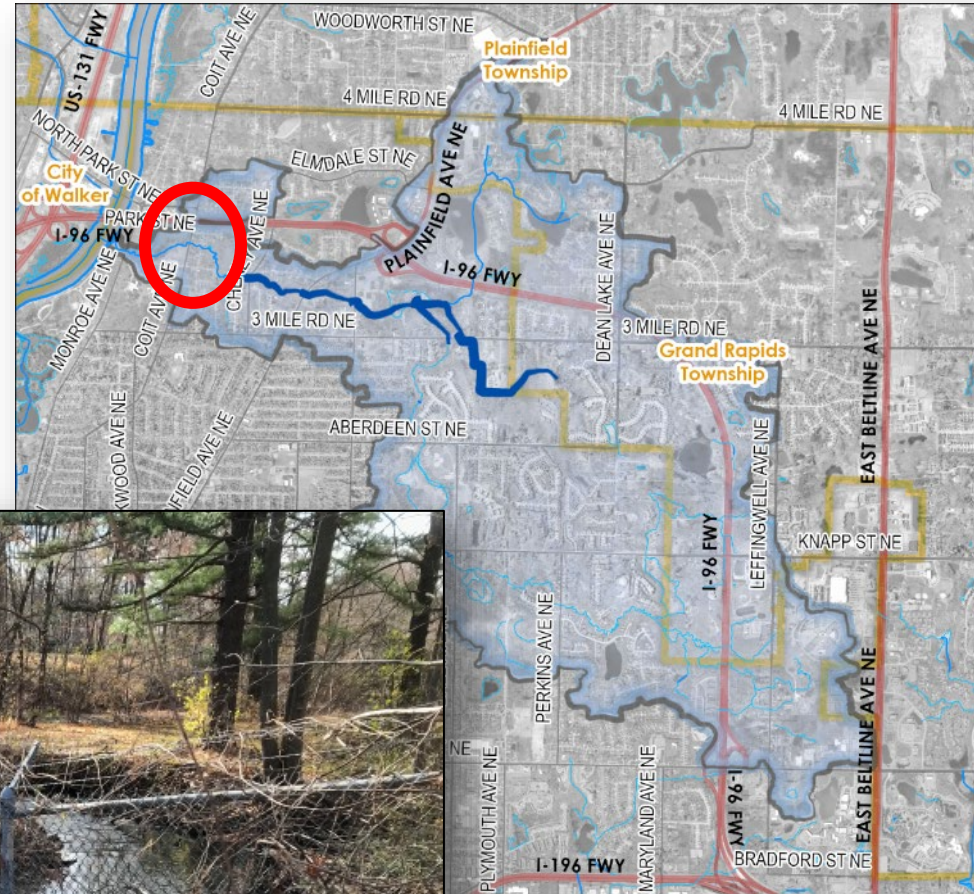
*Undersized culvert
Channel widening and undercut
banks downstream*

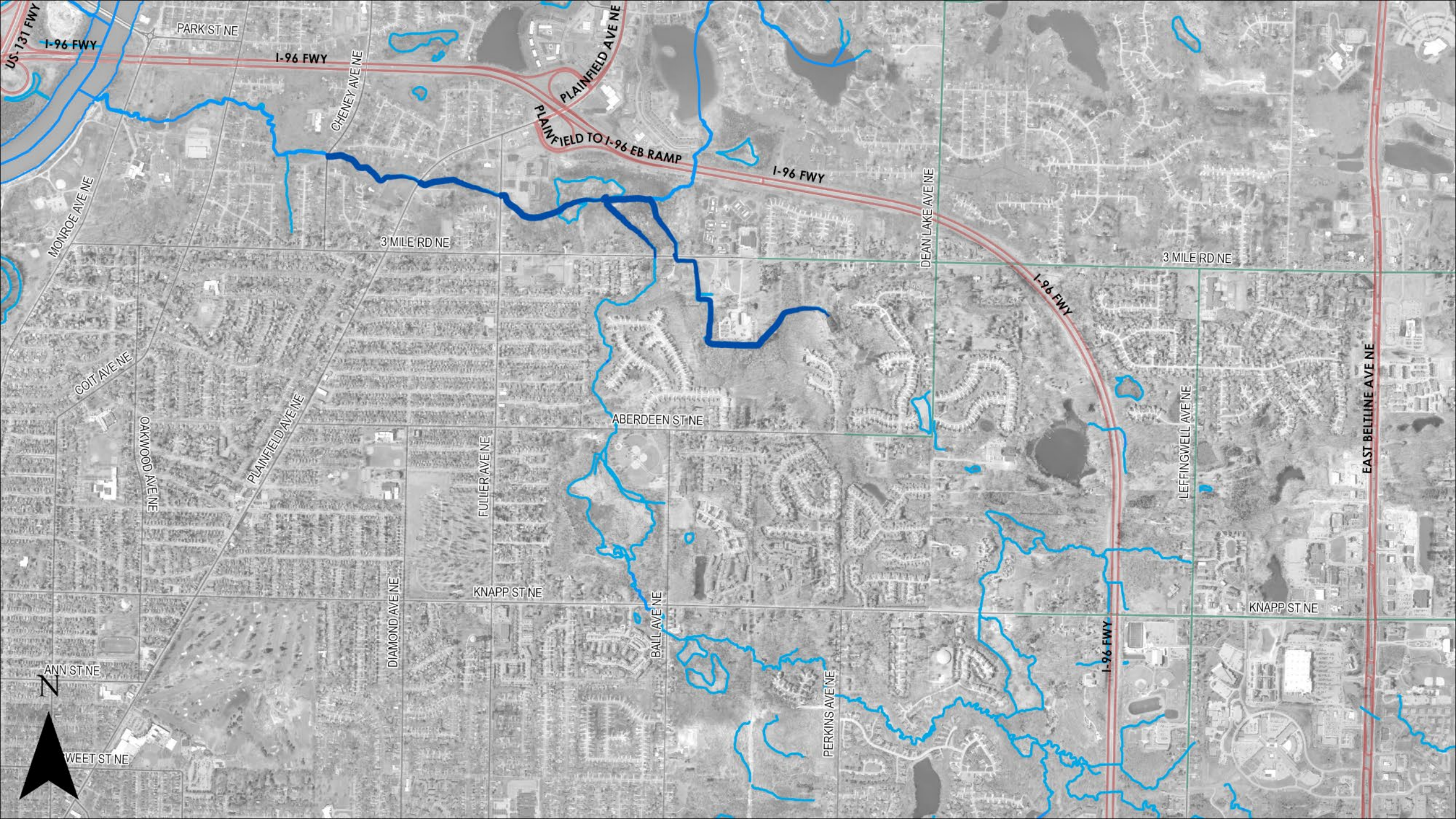


Inspection – Coit Avenue



*Undersized culvert
Fence across downstream face
Erosion downstream*





US-131 FWY
1-96 FWY
PARK ST NE
1-96 FWY
CHENEY AVE NE
PLAINFIELD AVE NE
PLAINFIELD TO I-96 EB RAMP
1-96 FWY
MONROE AVE NE
3 MILE RD NE
DEAN LAKE AVE
3 MILE RD NE
COIT AVE NE
OAKWOOD AVE NE
PLAINFIELD AVE NE
ABERDEEN ST NE
FULLER AVE NE
KNAPP ST NE
DIAMOND AVE NE
BALL AVE NE
PERKINS AVE NE
1-96 FWY
LEFFINGWELL AVE NE
EAST BELTLINE AVE NE
ANN ST NE
WEET ST NE
KNAPP ST NE

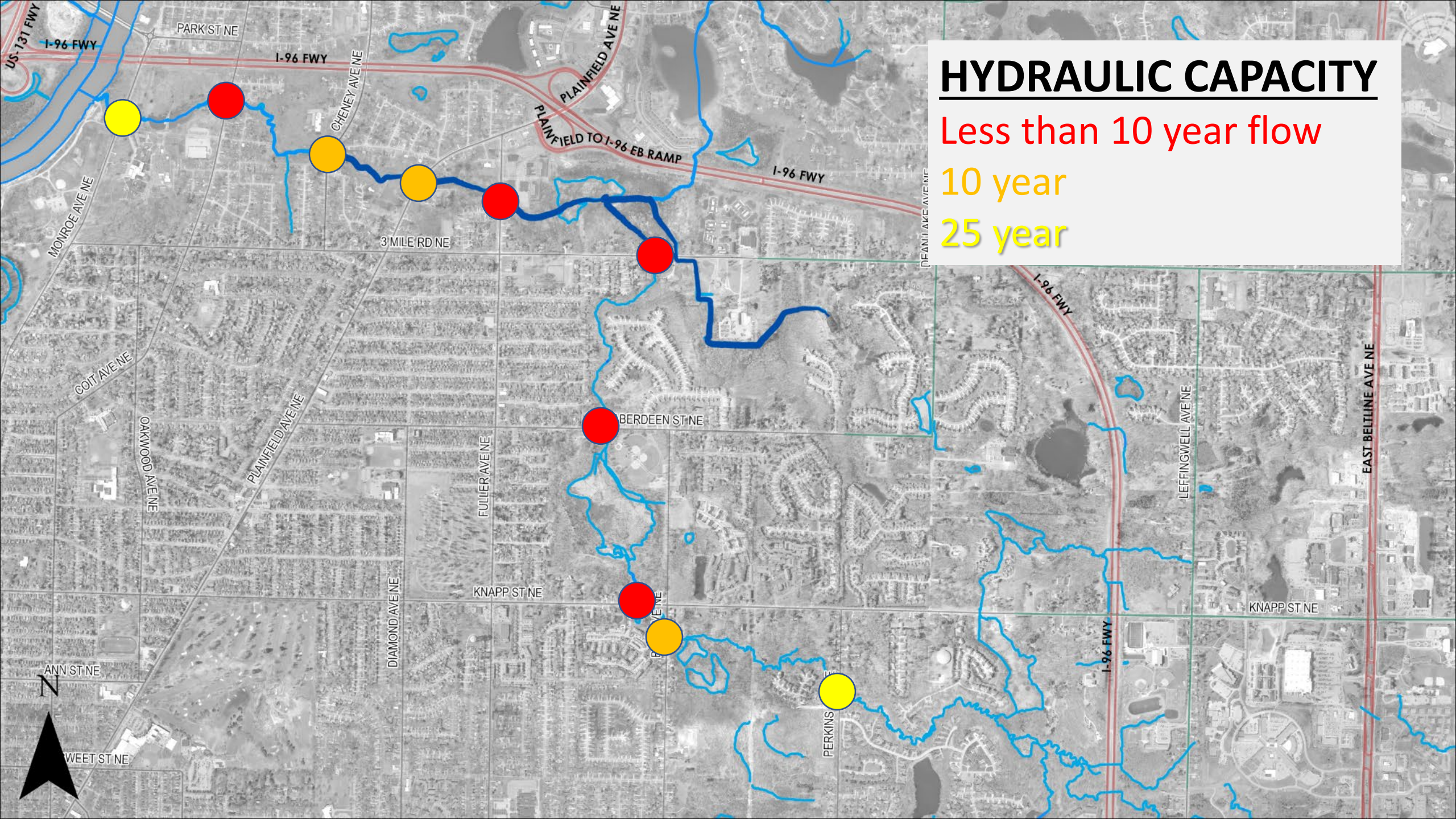


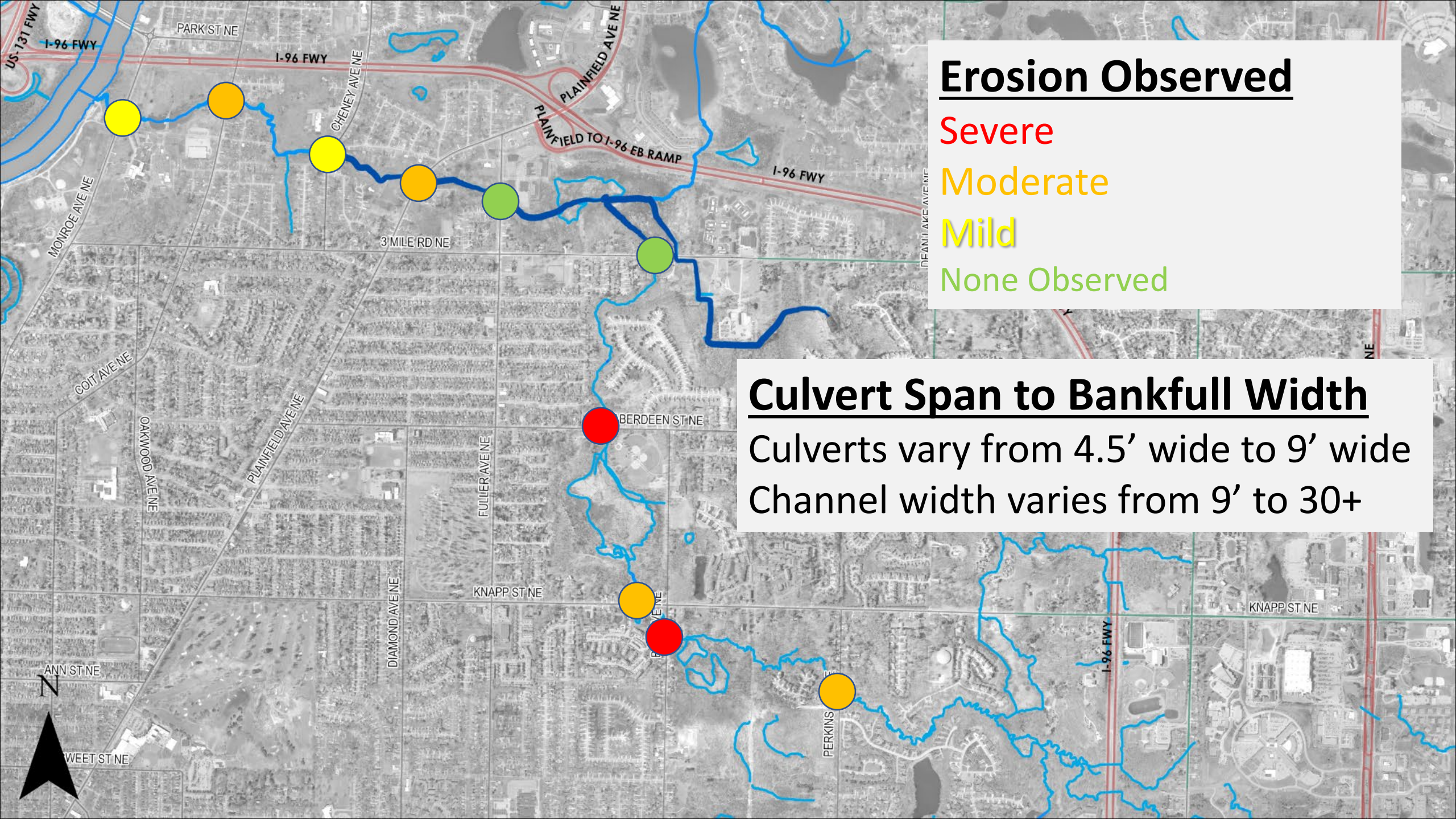
HYDRAULIC CAPACITY

Less than 10 year flow

10 year

25 year





Erosion Observed

- Severe
- Moderate
- Mild
- None Observed

Culvert Span to Bankfull Width

Culverts vary from 4.5' wide to 9' wide
Channel width varies from 9' to 30+



Observations

- Significant amount of fallen woody debris and obstructions
- Undersized culverts -> Restricted ability to convey water
- Erosion throughout entire reach including areas with no one responsible

Public Comment

- Please state your name and address clearly
- Address comments to the Board
- Limit comments to 3 minutes



Next Steps

- Public Testimony
- Board to Determine Necessity of Petition
- If Petition Deemed “Not Necessary”
 - Process ends
- If Petition deemed “Necessary”
 - Evaluate scope of work needed
 - Easements and Rights of Way
 - Obtain required permits and bid any maintenance
 - Day of Review of Apportionments



Reminder

Function of the Board of Determination is to decide whether a problem exists and whether a project is necessary.

If the Board finds the proposal necessary, then the drain commissioner determines possible solutions.

No engineering work has been completed and no projects are identified today

No costs or assessments have been determined



Ken Yonker, Kent County Drain Commissioner

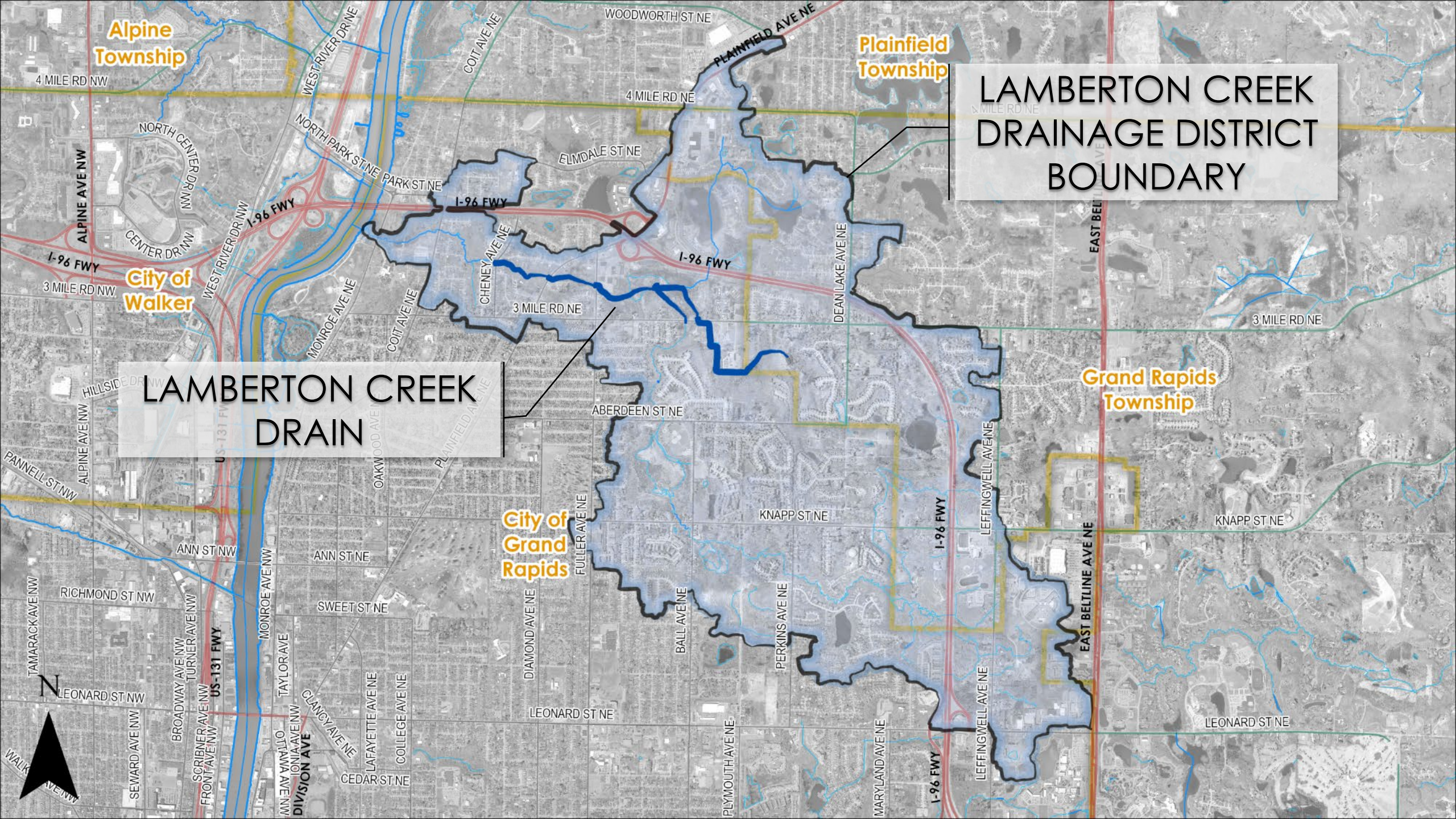
616-632-7911 ken.yonker@kentcountymi.gov

Joel Morgan, Senior Engineer

616-632-7914 joel.morgan@kentcountymi.gov

For Further Questions,
please contact us at:





Alpine Township

Plainfield Township

LAMBERTSON CREEK DRAINAGE DISTRICT BOUNDARY

City of Walker

LAMBERTSON CREEK DRAIN

Grand Rapids Township

City of Grand Rapids

