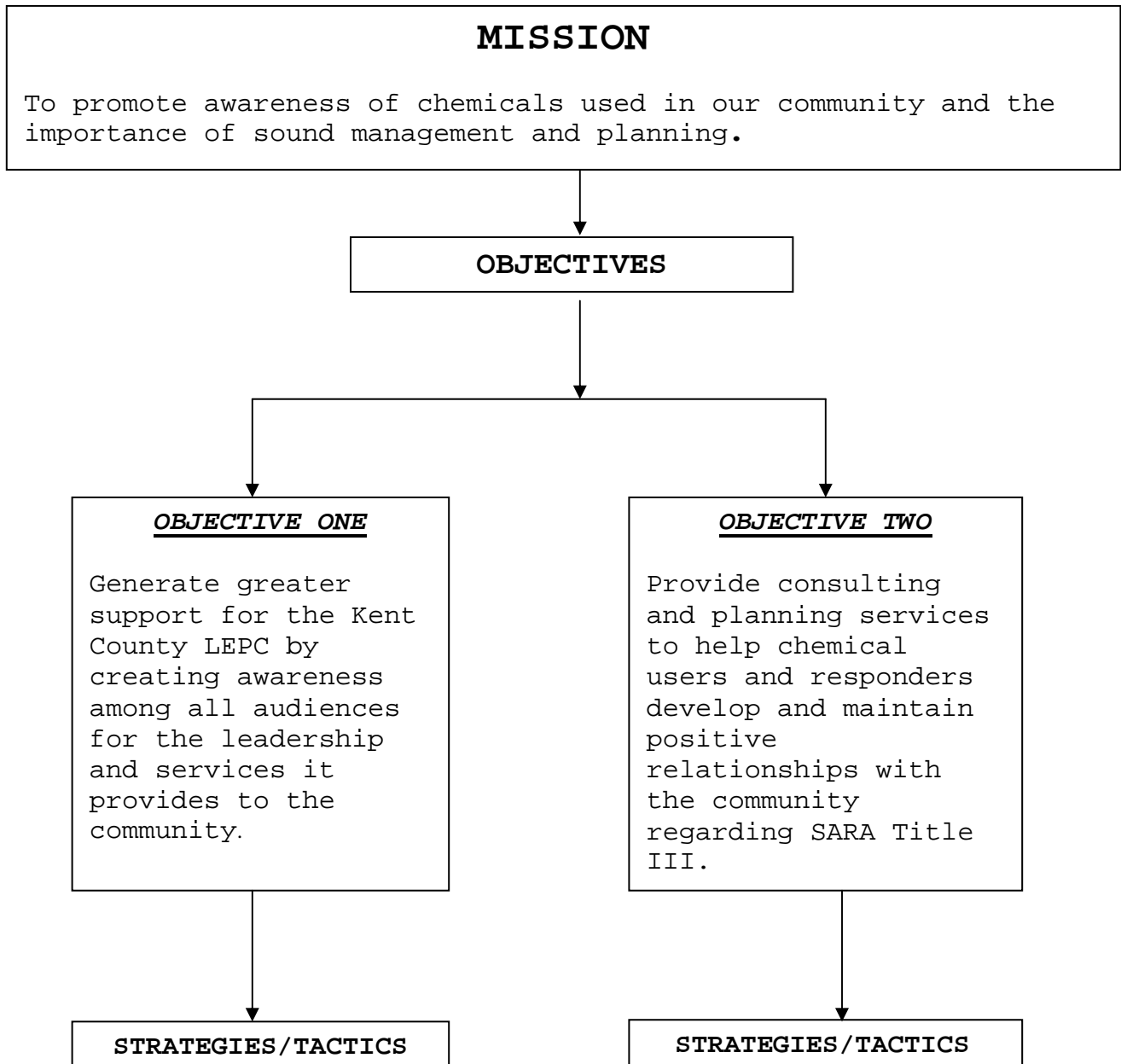


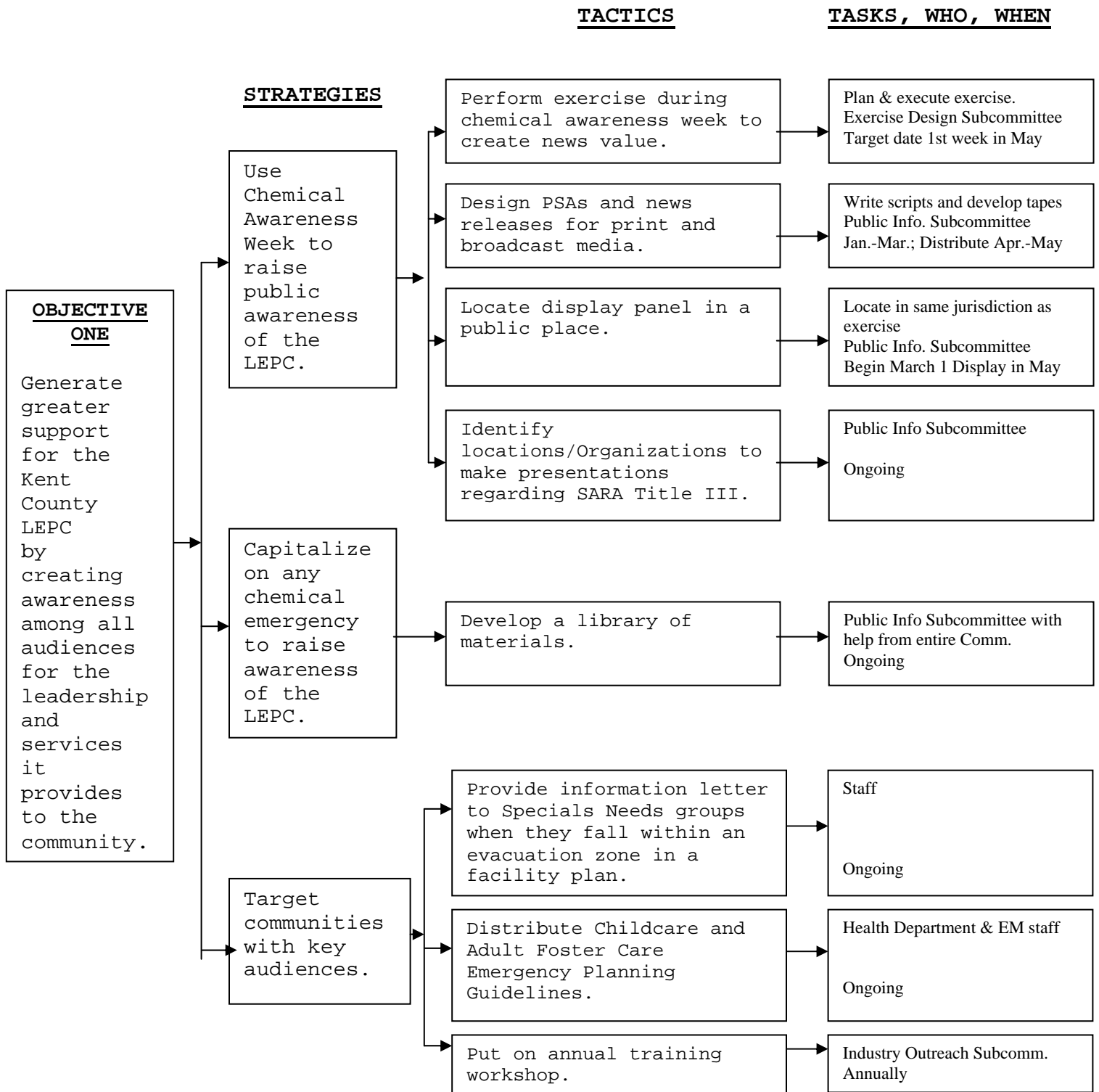


Kent Co. Emergency Planning Committee
Kent Co. Sheriff's Department
Office of Emergency Management
701 Ball N.E.
Grand Rapids, MI 49503
(616) 632-6256
Fax: (616) 632-6260

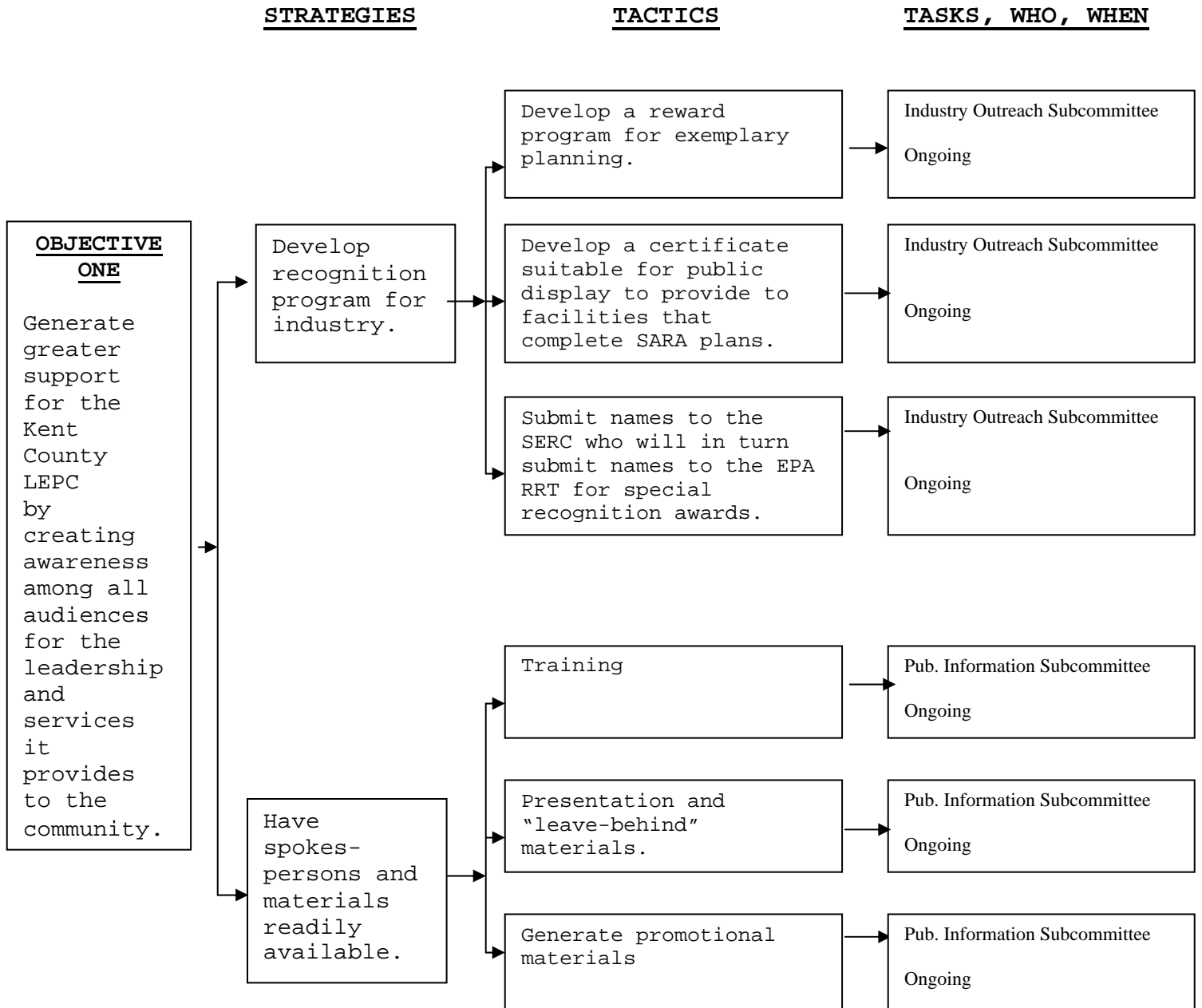
KENT COUNTY LOCAL EMERGENCY PLANNING COMMITTEE (LEPC) COMMUNITY OUTREACH PLAN 2007



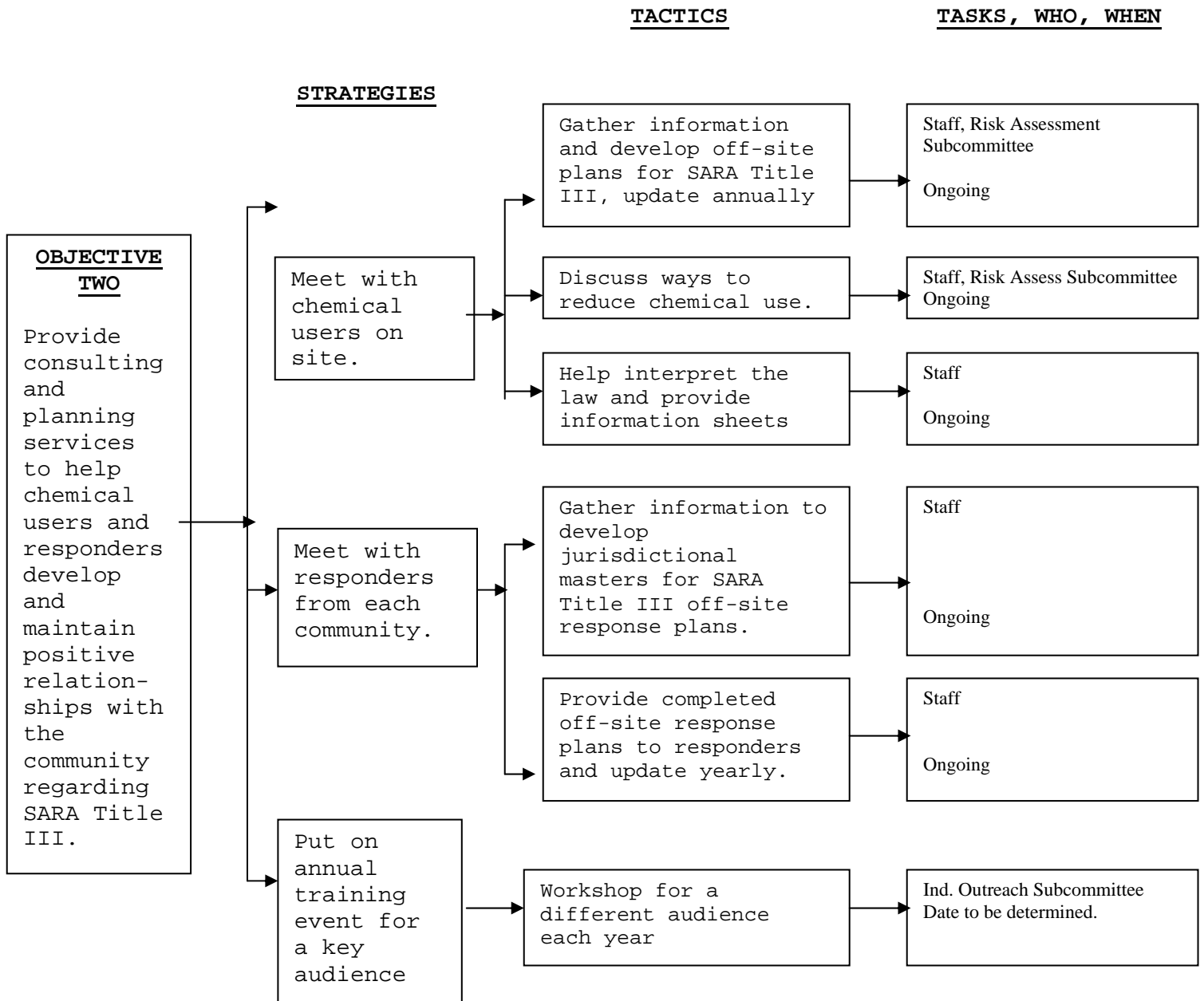
KENT COUNTY LEPC COMMUNITY OUTREACH PLAN



KENT COUNTY LEPC COMMUNITY OUTREACH PLAN



KENT COUNTY LEPC COMMUNITY OUTREACH PLAN



KENT COUNTY LEPC COMMUNITY OUTREACH PLAN

